

Decentral rainwater management plan for the response to climate change with consideration for Nature, Neighbor and Next generation

-a case study for Hyoja drainage area of Seoul Korea



Kwon* and Harald Sommer**

*Engineering Research Institute, Seoul National Univ.

**IPS(Ingenieurgesellschaft Prof. Sieker mbH)



Hyoja Area 1953



Hyoja Area 1953



Hyoja Area 2013

Problem



2010 -9-21 Hyoja Area(75mm/hr, 202mm/3h)

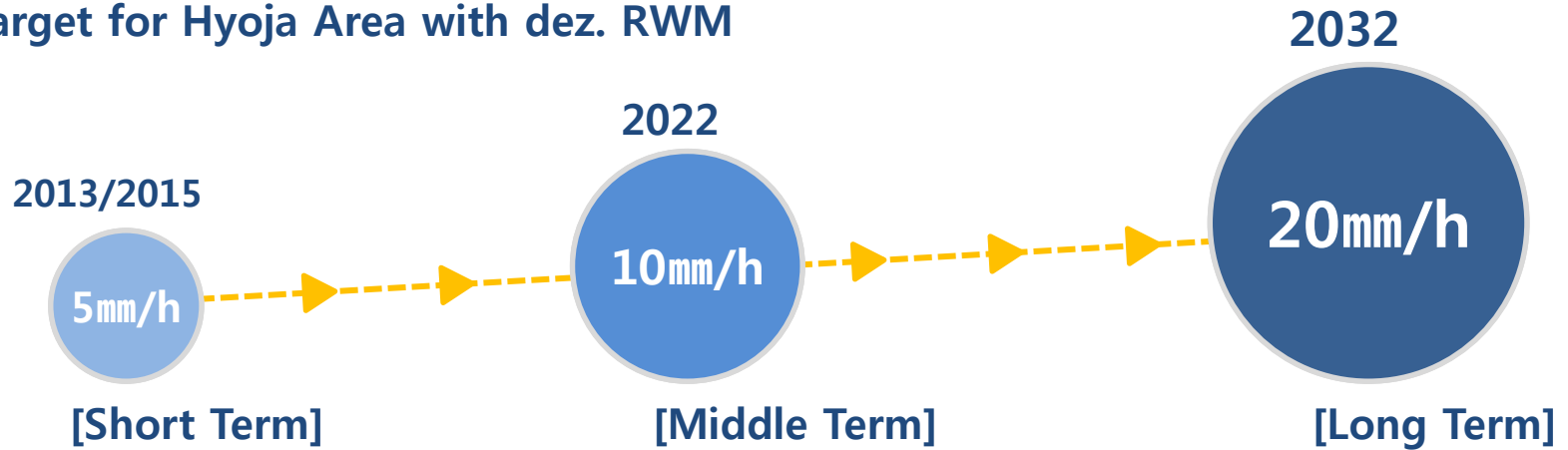


2011- 7-27 Gangnam Area(65mm/hr, 103mm/3h)

Target



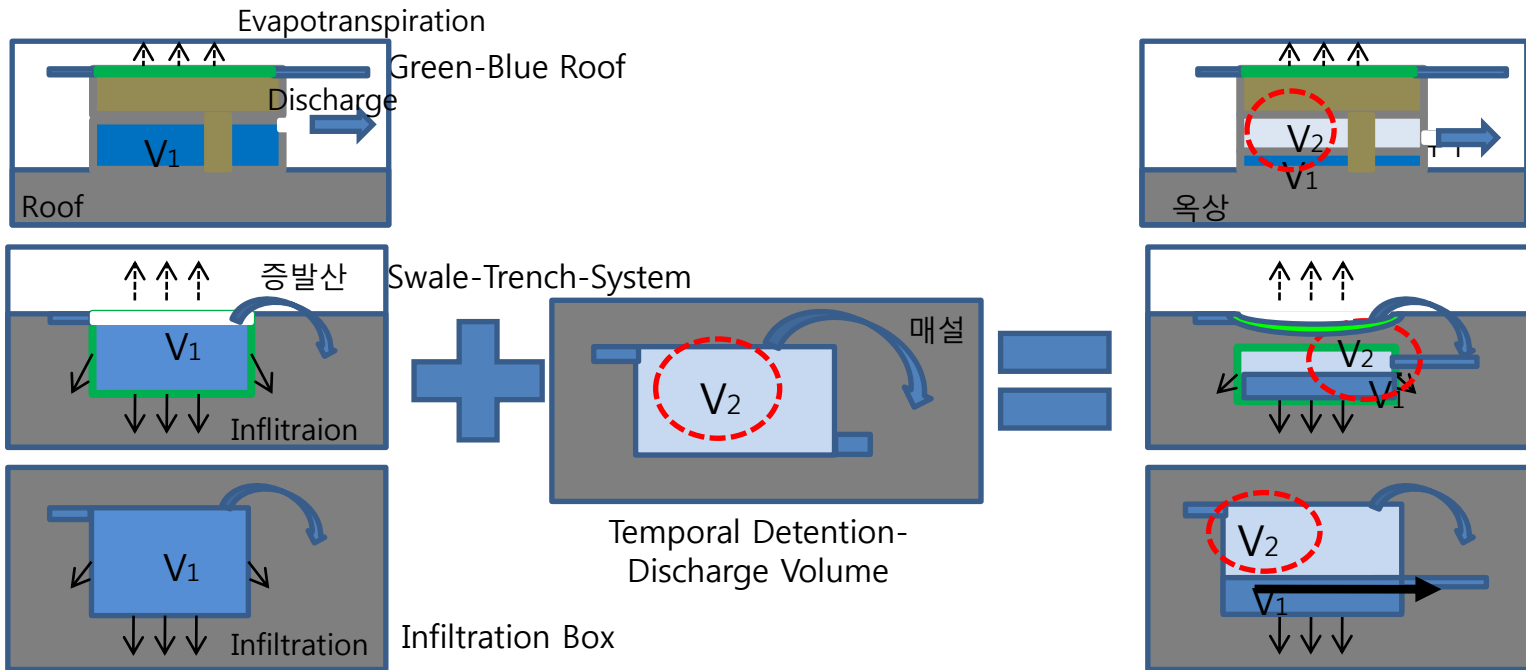
Target for Hyoja Area with dez. RWM



	Year	Water cycle			Flood Control
		Evapotrans. [m ³ /y]	Infiltration [m ³ /y]	Surface runoff [m ³ /y]	Discharge (95mm/h)
2012	-	1,721,763	1,727,501	5,297,239	-
Short	2013/2015	1,729,234	2,093,517	4,985,390	5mm/h
Middle	2022	1,756,490	2,342,688	4,758,232	10mm/h
Long	2032	1,824,154 (20.5%)	2,711,112 (30.6%)	4,321,087 (48.8%)	20mm/h

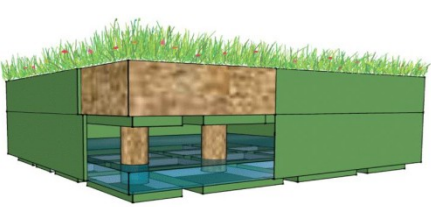



Dez. RWM Measures with flood control function

3 Measures



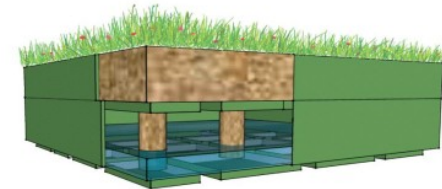


Dez. RWM Measures with flood control function

	Green-Blue Roof	Infiltration Box	Swale-Trench-System
Measures	 		

Method

건강하고 안전한
물환경관리도시



Green-Blue Roof

Possible
Area
Analysis

Object

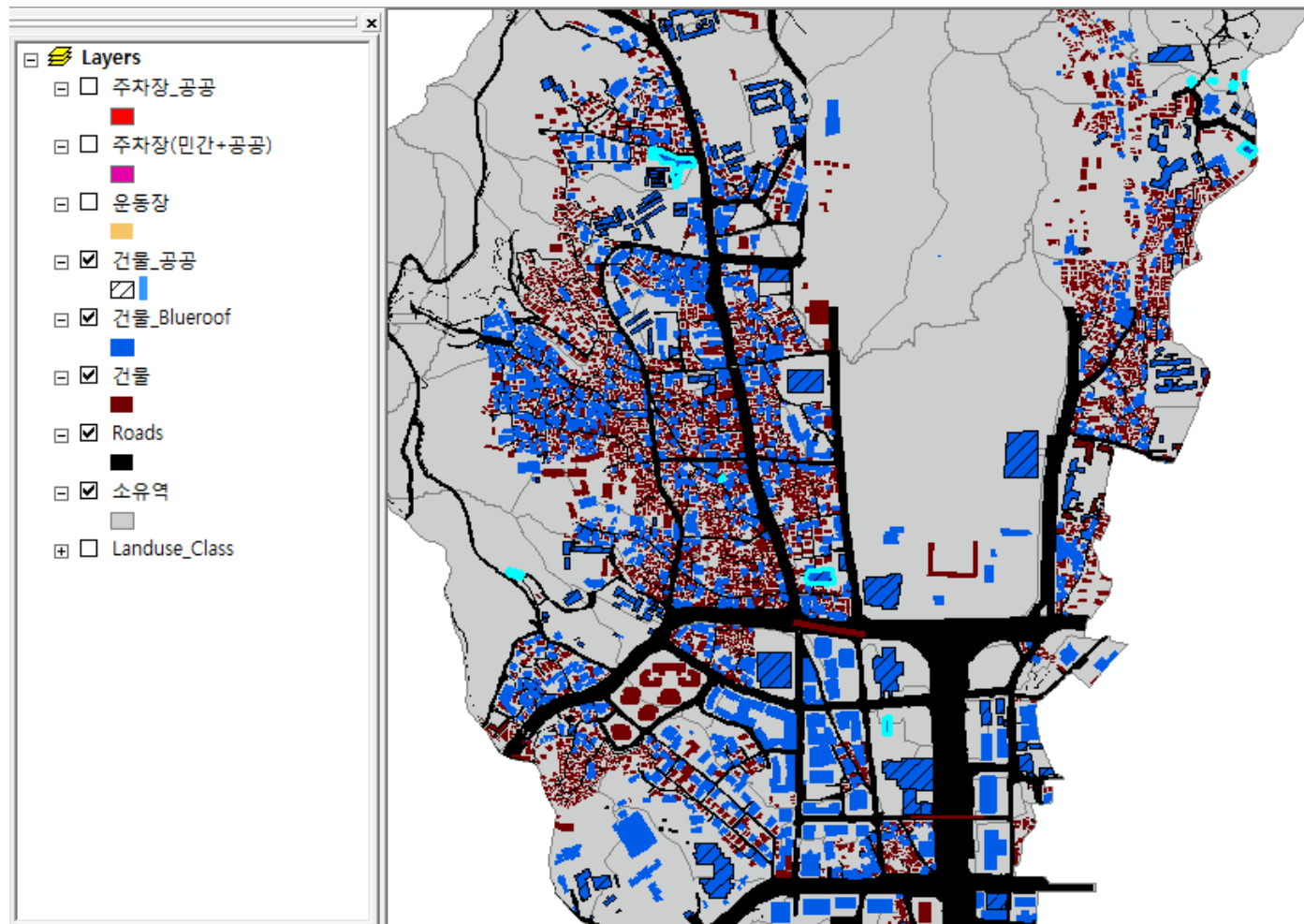
20
Public
Buildings

Area

38,494m²

Rate

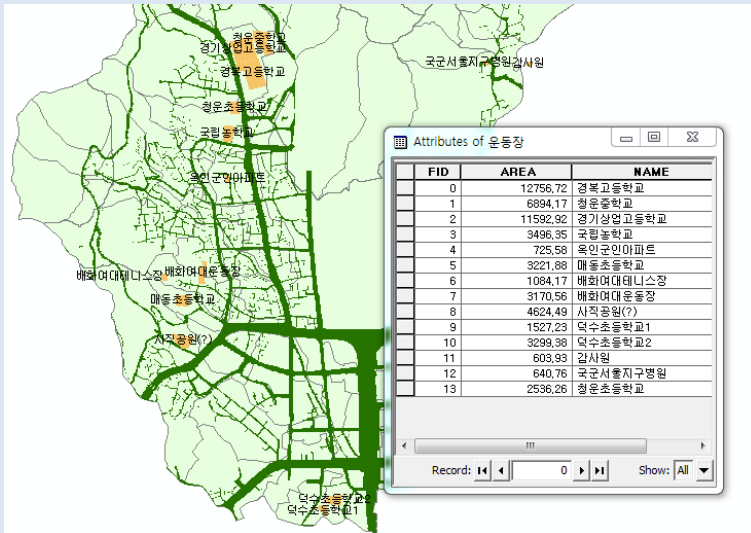
5.3%





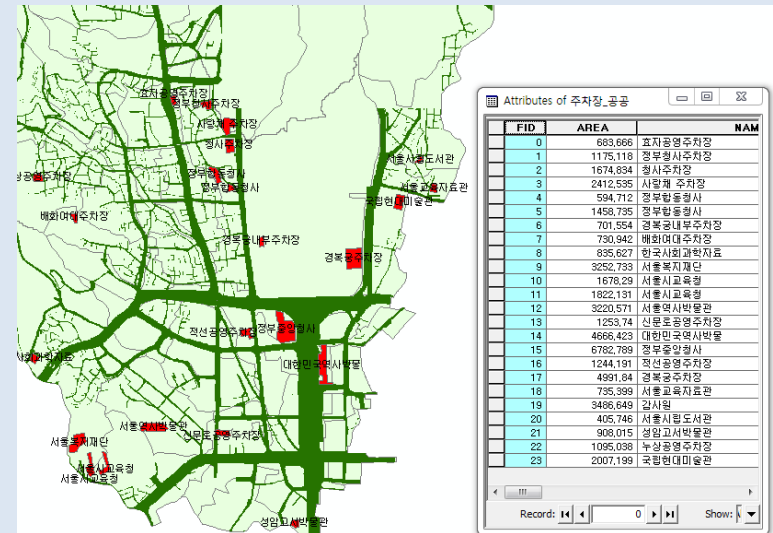
▶ Infiltration Box

Playground



Total
13개

Parking Area



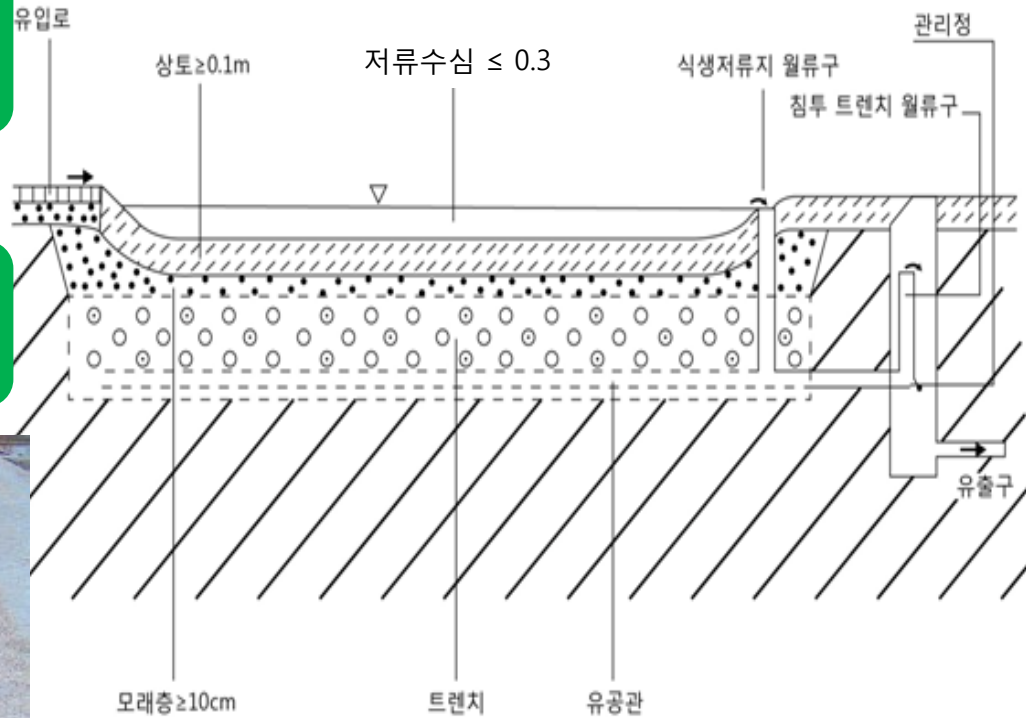
Total
23개



➤ Swale-Trench-System

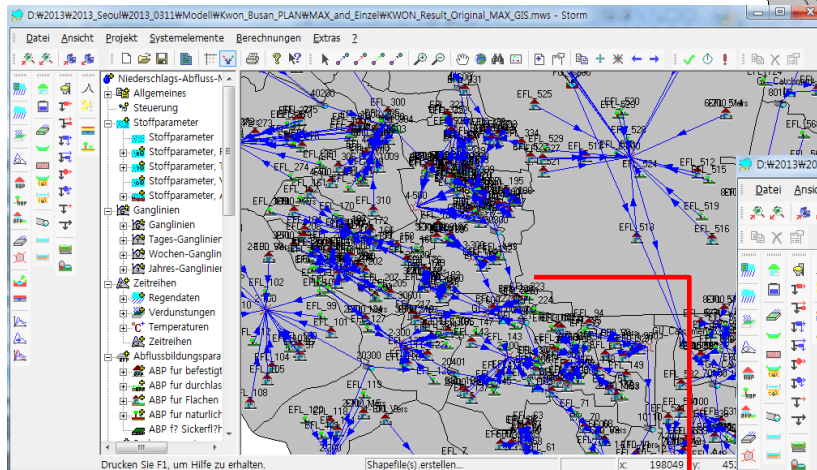
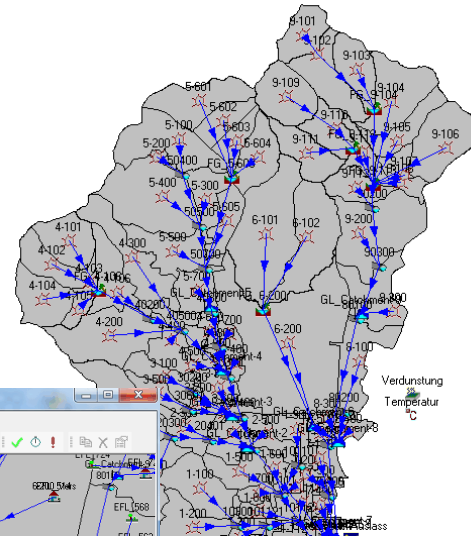
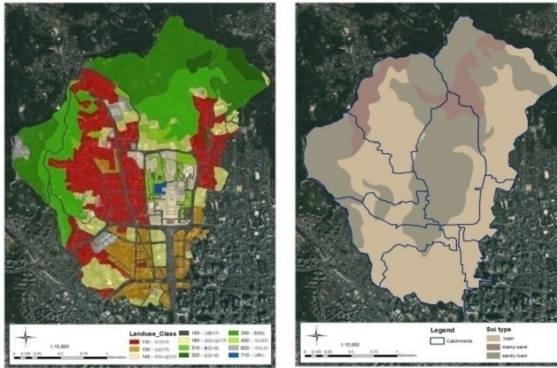
Object

Park, Street, Plaza,
Parking area and so on



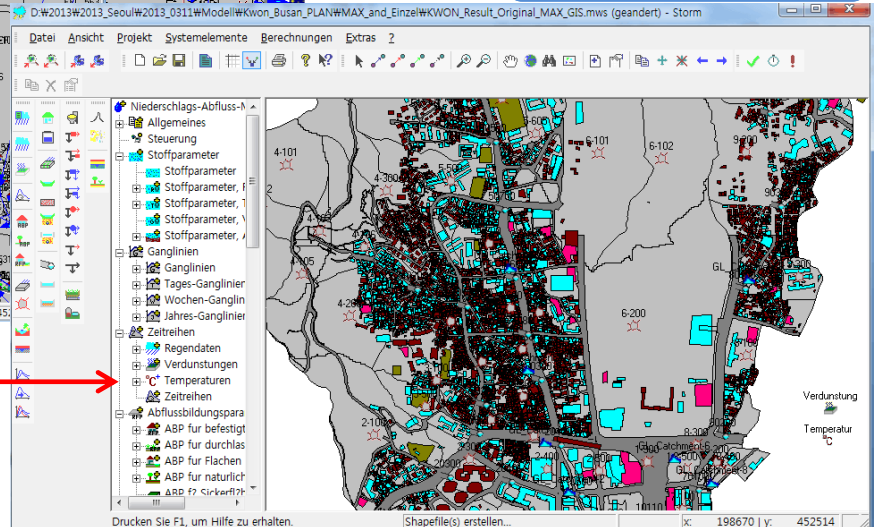


❖ Rainfall – Runoff Model with STORM(IPS)



독일 STORM 모형

시나리오 모의
및 최적화





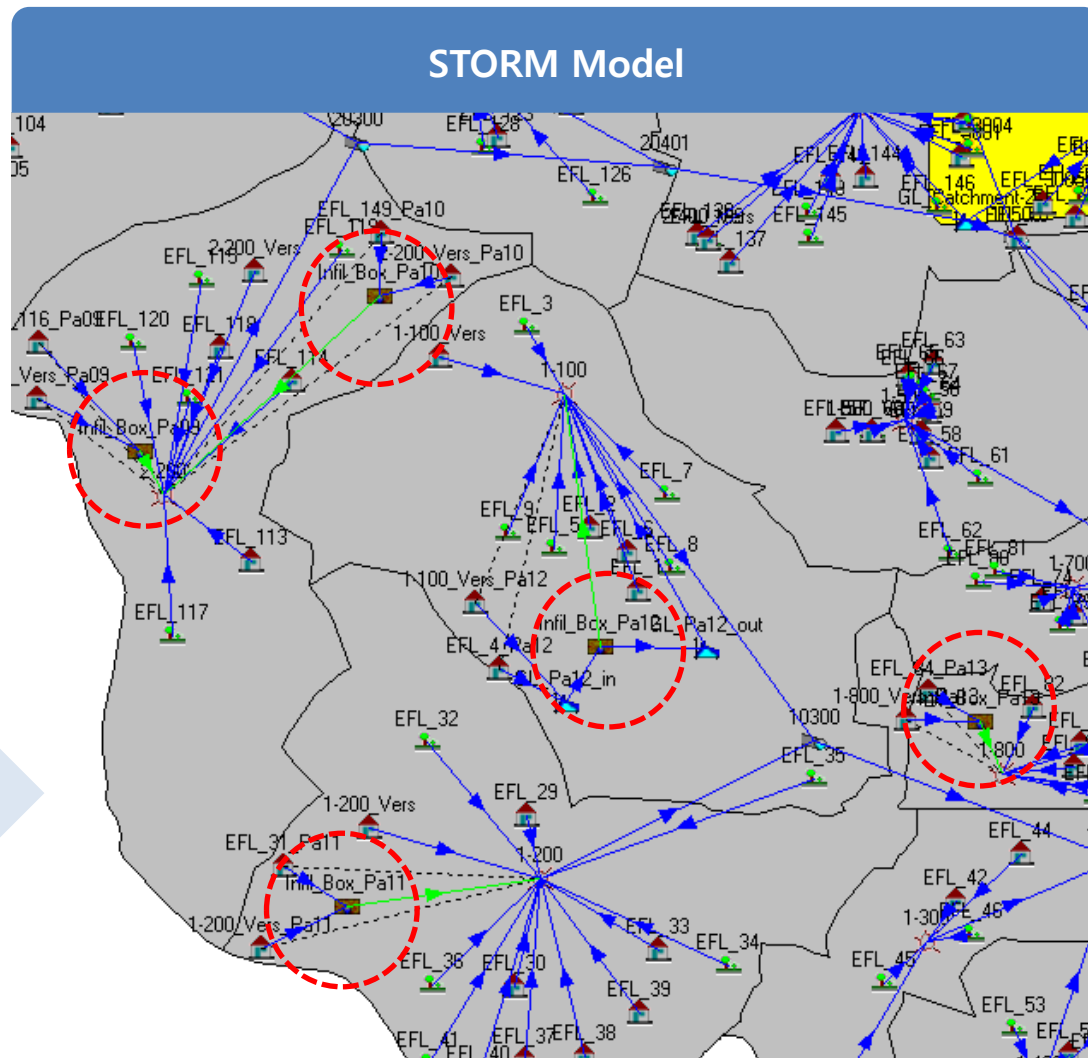
Simulation Approach

① Individual Measures

+

② Catchment Area-Measure Combination Method

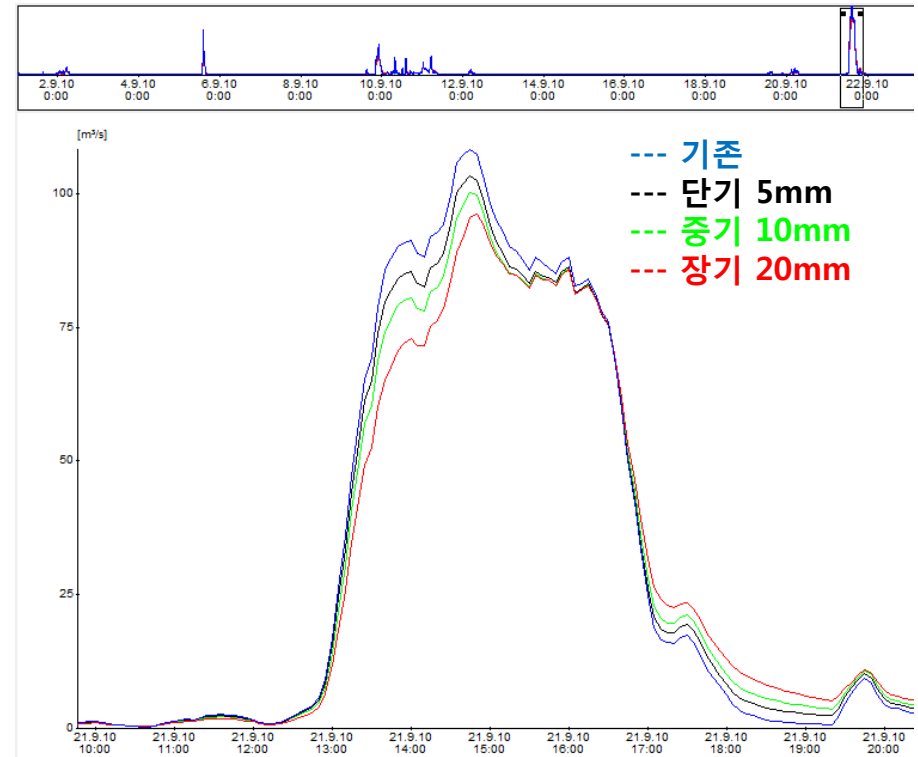
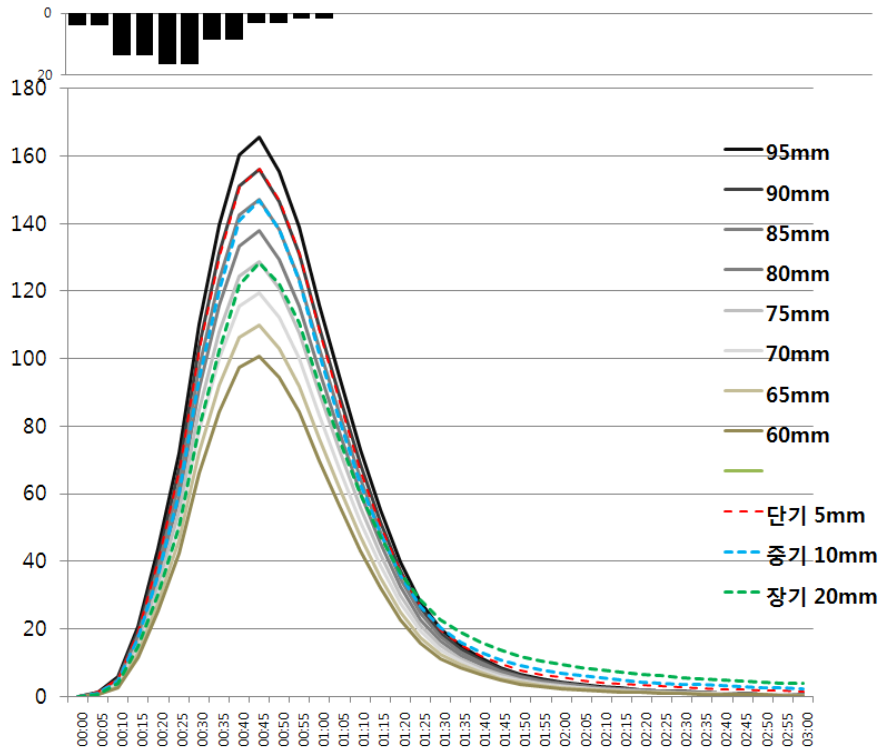
STORM모형





Flood Control

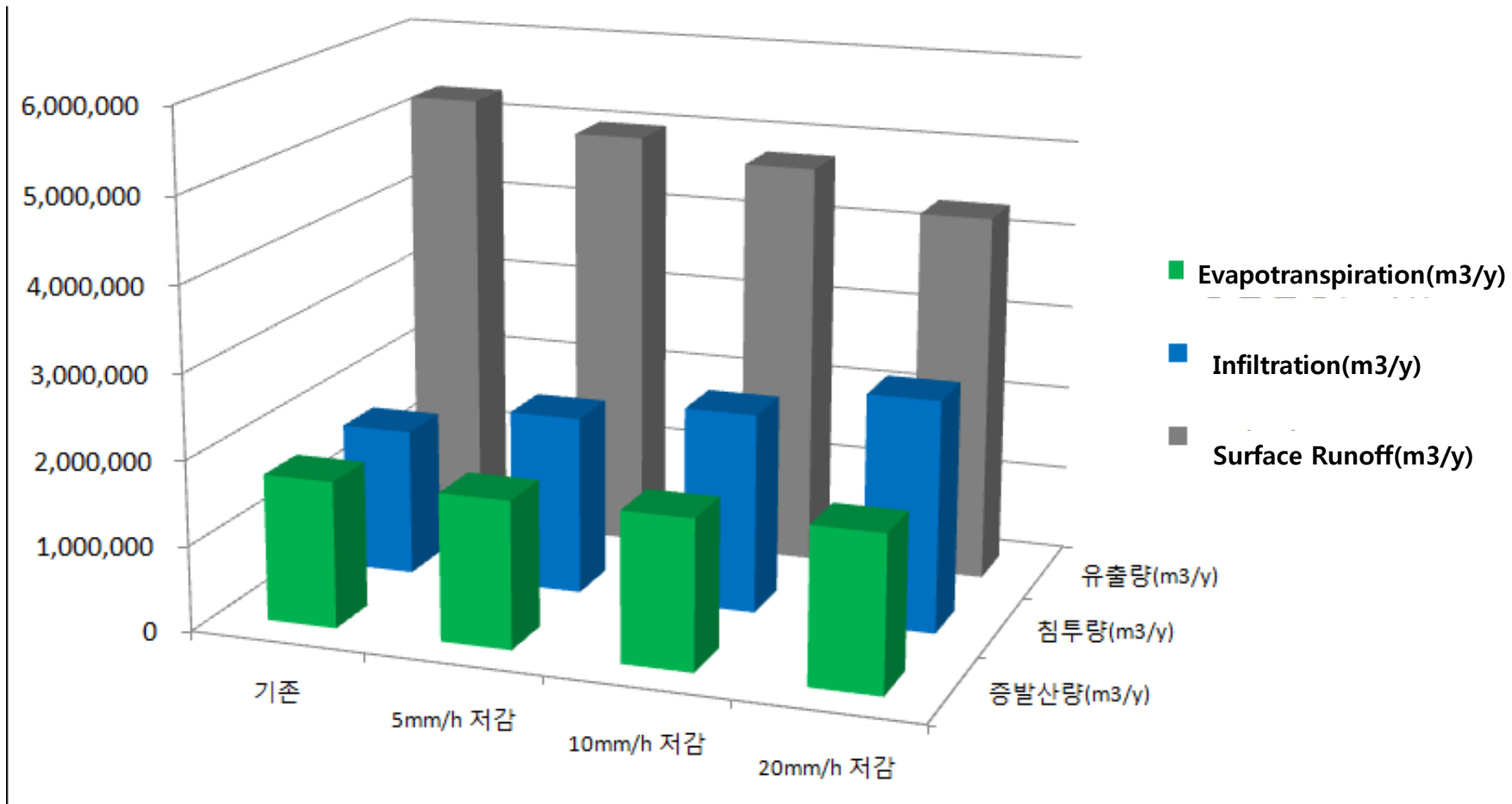
Reduction of Peak flow in 95mm/hr Huff 2. Distribution and at 2010.09.21 event



(2010-9-21)



Water cycle



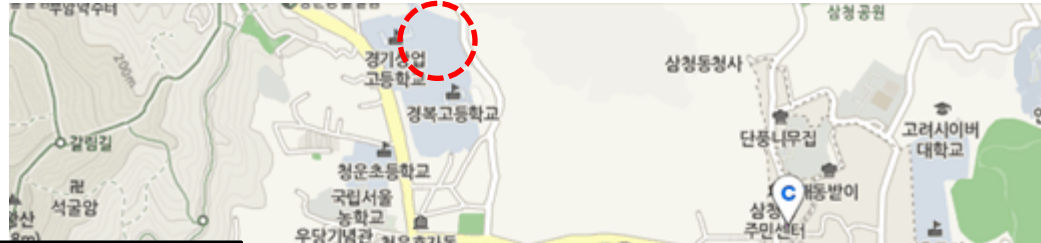
Long Term Simulation(2002-2011, Seoul, 5min Interval)

Construction of Model Sites

건강하고 안전한
물환경관리도시



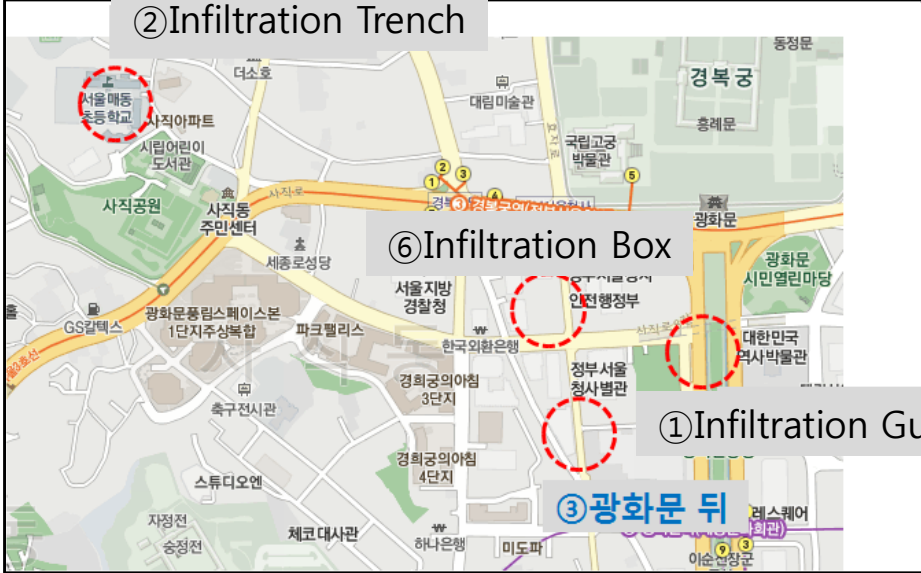
④ Green-Blue Roof



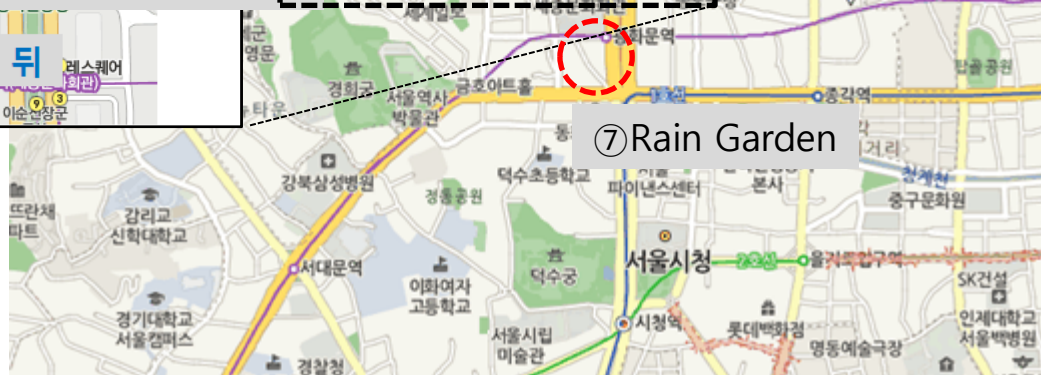
③ Swale-Trench-System



⑥ Infiltration Box

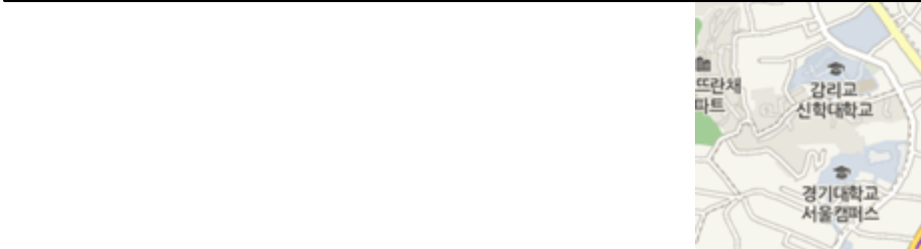


① Infiltration Gutter



⑦ Rain Garden

③ 광화문 뒤



② Infiltration Trench



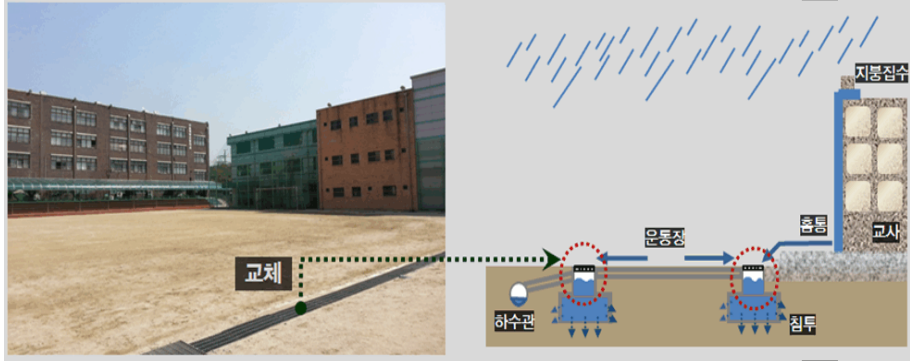


Construction of Model Sites

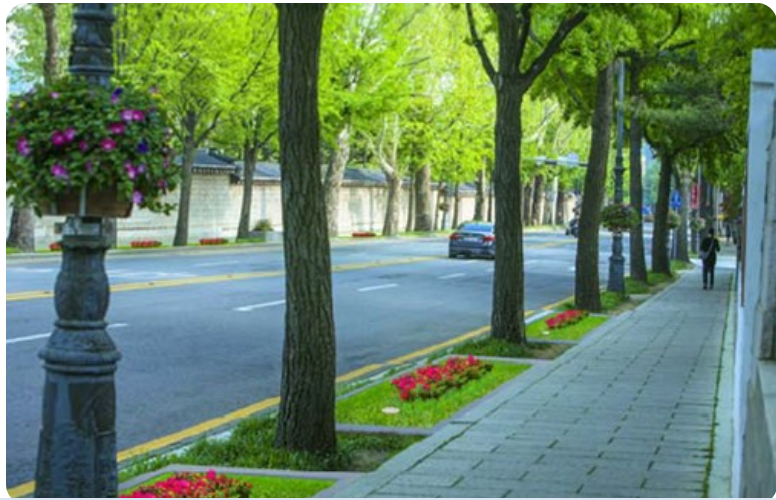
① Infiltration Gutter



② Infiltration Trench



③ Swale Trench System





Construction of Model Sites

④ Green Blue Roof



⑤ Permeable Pavement



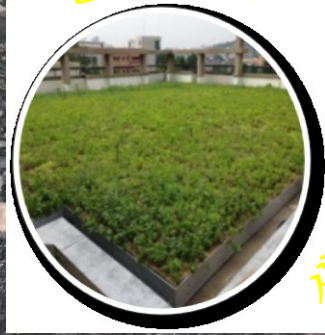
⑥ Infiltration Box



⑦ Rain Garden



블루루프



김투형 배수로



평대저류형 배수로



친환경보도블록



김투저류조



김투형 빗물받이



Thank You Very Much

시종로구