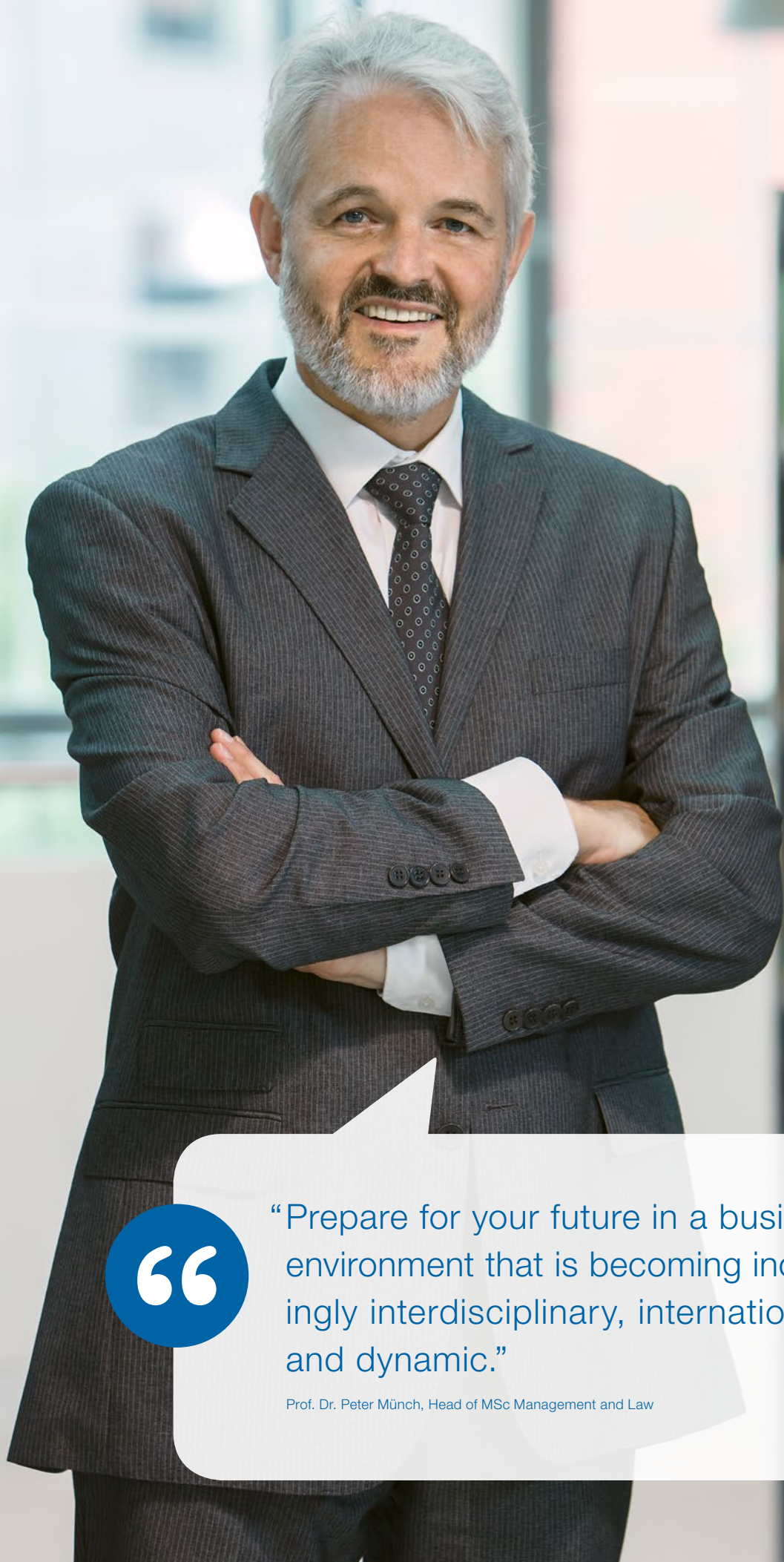


# Management and Law

## Master of Science (MSc)



**Building Competence. Crossing Borders.**



“

“Prepare for your future in a business environment that is becoming increasingly interdisciplinary, international, and dynamic.”

Prof. Dr. Peter Münch, Head of MSc Management and Law

# Editorial

The world is becoming increasingly fast-paced, interconnected, and complex. Through a practical approach and a demanding curriculum, our Master's degree program aims to prepare you for these challenges and provide you with a competitive edge.

Businesses are faced with frequent change that is becoming more and more disruptive. The climate of continuous change affects corporate activity, but it also offers opportunities. Those who are proactive and respond quickly have a competitive advantage.

Challenges are on the increase, particularly at the interface between management and law. Foreign legislation and transnational regulations have an influence on how companies need to operate in international business. In contract negotiations, the parties increasingly insist on specifying every detail and contingency. When faced with a conflict, people are much quicker to initiate legal steps or threaten legal action. In such situations, you need to be able to distinguish between serious legal issues and superfluous complications.

In a management context, law is not only a risk factor. It can also be used as a control and management tool. The key is for legal requirements and options to become integral parts of business decisions and processes. Management skills alone are no longer enough. By the same token, legal expertise without a deep understanding of business needs will not produce the desired results either. Today's climate of change requires you to be proficient in both.



**Prof. Peter Münch, Dr. iur.**

Head of Program, Master of Science in Management and Law  
ZHAW School of Management and Law



In 2015, the SML became the first business school of a Swiss university of applied sciences to be accredited by the Association to Advance Collegiate Schools of Business (AACSB). A mere six percent of the world's business schools have managed to achieve this prestigious standard of achievement awarded by the most significant international accreditation institution for business schools.



The SML is listed in the renowned rankings by the business newspaper Financial Times. It is a leading European business school and, with its Master of Science in International Business, offers one of the best Master's management programs in the world.

---



# Table of Contents

|    |  |
|----|--|
| 5  | <b>AT A GLANCE</b>   |
| 6  | <b>FIVE REASONS FOR GETTING A MASTER'S DEGREE AT THE SML</b> |
| 7  | <b>CONSECUTIVE MASTER'S PROGRAM</b>                          |
| 9  | <b>THE VALUE ADDED OF THE PROGRAM</b>                        |
| 10 | <b>PROGRAM</b>   |
| 12 | <b>PROGRAM STRUCTURE</b>                                     |
| 14 | <b>MODULES</b>   |
| 16 | <b>ACCREDITATIONS AND RANKINGS</b>                           |
| 17 | <b>AN INTERNATIONAL OUTLOOK</b>                              |
| 19 | <b>PRACTICAL RELEVANCE</b>                                   |
| 20 | <b>CAMPUS PLUS</b>   |
| 22 | <b>ADMISSION REQUIREMENTS</b>                                |
| 23 | <b>THE SML IN FIGURES</b>                                    |

# At a Glance

---

## Key Data

|                                 |  |
|---------------------------------|--|
| <b>Title</b>                    | <b>Master of Science (MSc) ZHAW in Management and Law</b>  |
| <b>Start</b>                    | <b>Mid-September</b>   |
| <b>Workload</b>                 | <b>90 ECTS credits (approx. 2,700 hours of study)</b>  |
| <b>Length of Program</b>        | <b>4 or 6 semesters (can be combined with family commitments or work not exceeding 40% or 70%)</b> |
| <b>Location</b>                 | <b>Winterthur</b>  |
| <b>Semester Fees</b>            | <b>Swiss nationals CHF 720, others CHF 1,220</b>   |
| <b>Admission Requirements</b>   | <b>Admission procedure</b>   |
| <b>Languages of Instruction</b> | <b>German and English (in equal proportions)</b>   |
| <b>Attendance</b>               | <b>Monday and Tuesday</b>  |

---

## Competence Profile

Interdisciplinary Master's degree program combining management skills with legal expertise. It has an international orientation and focuses on strategic, operational, and legal project and change management.

---

## Contact

### HEAD OF MSC PROGRAM

**Prof. Peter Münch, Dr. iur.**  
ZHAW School of Management and Law  
Gertrudstrasse 15  
P.O. Box  
8401 Winterthur  
Switzerland  
Phone +41 58 934 76 58  
[peter.muench@zhaw.ch](mailto:peter.muench@zhaw.ch)

### ADMINISTRATION

ZHAW School of Management and Law  
Student Services  
St.-Georgen-Platz 2  
P.O. Box  
8401 Winterthur  
Switzerland  
Phone +41 58 934 68 68  
[studentservices.sml@zhaw.ch](mailto:studentservices.sml@zhaw.ch)

All information about this program can also be found at:

>>> [www.zhaw.ch/sml/master-ml-en](http://www.zhaw.ch/sml/master-ml-en)



# Five Reasons for Getting a Master's Degree at the SML

---



## **PRACTICAL ORIENTATION**

At the ZHAW School of Management and Law (SML), not only are instructors academically qualified, but they also have extensive practical experience as well as access to a broad professional network. Teaching is oriented towards practical experience. In addition, the program provides opportunities for you to meet potential future employers.

---



## **DIGITAL LEARNING**

Teaching at the SML is continually being developed and updated to incorporate modern teaching methods. Digitally supported learning makes content descriptive, enables learning to be more flexible in terms of time and place, and integrates career-relevant media tools into the study program.

---



## **INTERNATIONAL ALIGNMENT**

The SML has a network of over 190 selected partner universities worldwide, enabling students to gain valuable experience abroad.

---



## **HIGHLY REGARDED AND AACSB-ACCREDITED**

Since 2015, the SML has been proud to be accredited by the AACSB – a sought-after quality seal on the international job market. It also features in the prestigious Financial Times rankings, including the list of the best European business schools.

---



## **STAYING CONNECTED**

Our campus is located in Winterthur, in close proximity to the financial and business center of Zurich and well connected to the public transportation network. In addition, the close ties the SML has to companies and organizations as well as its extensive alumni network will give you excellent career prospects.

---

# Consecutive Master's Program

## The next step in your professional career

Consecutive Master's degree programs are targeted mainly at exceptionally capable and ambitious Bachelor's graduates seeking a further academic qualification and possessing a keen scientific interest.

### THE BENEFITS OF A CONSECUTIVE MASTER'S PROGRAM

The minimum requirement for participation in a consecutive Master's program is a Bachelor's degree or equivalent qualification. Consecutive Master's programs at universities of applied sciences typically comprise 90 ECTS credits. This corresponds to a workload of approximately 2,700 hours, usually spread over four or six semesters. Consecutive Master's programs build on the content of Bachelor's degree programs. They offer a professional specialization with scientific skills development and high practical relevance. They promote professional, methodological, social, and self-competence and open up career prospects in middle and senior

management. Our consecutive Master's programs are recognized internationally, so they also enable graduates to pursue a career outside Switzerland.

### NOT ALL MASTER'S PROGRAMS ARE THE SAME

A consecutive Master's program is the second level of education in the university system and should not be confused with the MAS (Master of Advanced Studies) or the MBA (Master of Business Administration). Both the MAS and MBA are continuing education programs and require several years of practical experience on the part of participants. With a consecutive Master's program, the workload is greater, and academic standards are higher.

## STRUCTURE

|                |   |                      |  |
|----------------|---|----------------------|--|
| DEGREE PROGRAM | <b>MSc Master of Science</b><br>90 ECTS credits*              | CONTINUING EDUCATION | <b>MBA Master of Business Administration</b><br>90 ECTS credits        |
|                | <b>BSc Bachelor of Science</b><br>180 ECTS credits            |                      | <b>ExM Executive Master in Marketing Leadership</b><br>60 ECTS credits |
|                | <b>MAS Master of Advanced Studies</b><br>60 ECTS credits      |                      |  |
|                | <b>DAS Diploma of Advanced Studies</b><br>30 ECTS credits     |                      |  |
|                | <b>CAS Certificate of Advanced Studies</b><br>12 ECTS credits |                      |  |

\* Credits are based on the ECTS credit system (European Credit Transfer System). Credits create transparency in European education through a standardized evaluation of academic achievements. At the ZHAW School of Management and Law, one credit represents 30 hours of work in a (BSc/MSc) degree program and 25–30 hours of work in a continuing education program.



“Coping with challenging legal and compliance issues in a global business perspective – this is where I see my professional future.”

Claudia G. Schoch, Director at Julius Bär, Alumna MSc Management and Law



# The Value Added of the Program

## Your long-term prospects will improve significantly

Are you interested in business and law, and in particular the challenges that need to be faced in the corporate world? Does a corporate position at the point of interaction between business and law appeal to you?

### QUALIFICATIONS COMBINING MANAGERIAL AND LEGAL COMPETENCIES ARE IN DEMAND

You want to have a say in your company and make a difference. To be able to achieve this goal, you need managerial competence as well as legal knowledge. A Master's degree in Management and Law allows you to develop both. You will acquire the skills to take management aspects and legal issues into account simultaneously. It is this ability which is in particular demand in business today.

### A VERSATILE PROFILE

A Master's degree in Management and Law takes your career to a new level. It provides you with a competence profile enabling you to operate effectively in complex change processes. In particular, you will be able to:

- manage process design
- conduct an initial evaluation of legal implications and recognize the need for legal steps to be taken
- coordinate tasks
- interact effectively with the authorities and external consultants
- successfully implement a project management strategy



## Fields of Activity

After completing this Master's degree program, you will be ready to take on demanding administrative and cross-divisional functions at the interface between management and law and assume project management or divisional responsibility.

### SPECIFIC JOB ROLES

- Corporate secretary
- Executive assistant (PA) to the executive board
- Executive assistant to a CFO or CEO
- Compliance officer
- Manager in charge of intellectual property and monitoring of a company's competitive and regulatory environment
- Contract manager
- Consultant or manager for a trade association or a consulting firm providing legal and business advice to companies
- Administrative or managerial position in a bank or insurance company
- Positions in authorities and international organizations at the intersection of management and law

# Program

## Expand your competence profile

A consecutive Master's degree program follows on from a Bachelor's degree program. The guidelines developed under the Bologna Process set out comprehensive requirements for the qualifications to be gained in a Master's degree program.

### COMPETENCE PROFILE WITH PRACTICAL RELEVANCE

This Master's degree program is interdisciplinary in nature as well as scientifically sound and practically oriented. It provides knowledge and skills that have practical relevance for businesses today as well as being geared towards future needs. Unlike traditional legal studies, the program focuses on the competence to manage legal challenges in an international business environment. Mastering the curriculum of this program will enable you to understand the law as a risk factor and treat it accordingly. In addition, you will learn to identify legal opportunities and find effective solutions to implement them. The competence

profile meets the requirements of business practice. However, it is not designed to address the needs of traditional legal professions such as those of a law clerk or attorney. With a Master's degree in Management and Law, you will be able to assume responsibility in the following areas:

- Monitoring the competitive and regulatory environment of a company (planning and implementing early warning systems)
- Supporting the executive board of a company (creating fundamental decision-making instruments to develop the business model further and control the implementation of measures derived from it)

### THE THREE SPHERES OF THE COMPETENCE PROFILE

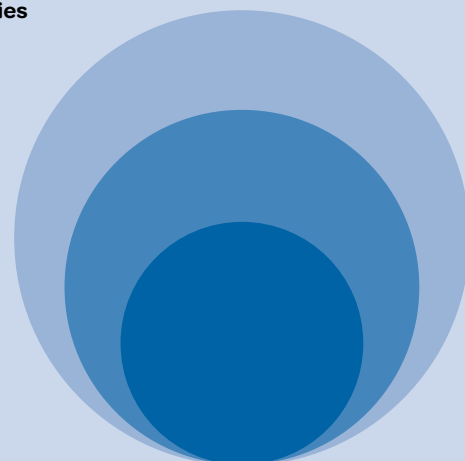
**Scientific Analysis, Problem-Solving, and Reflection Competencies**  
(legal and economic)

#### Context and Key Competencies

- International economics and politics
- Legal risk management and corporate governance
- Financial management

#### Core Competencies

- Strategic project and change management
- Operational project and change management
- Legal project and change management:
  - Regulation and competition
  - Corporate and tax law
  - Labor and social law





- Project work, project management, and project control (considering any legal steps required), particularly planning and running strategic projects, such as
  - cooperation and investment projects (e.g., developing joint ventures, subsidiaries, or distribution networks)
  - corporate optimization and restructuring projects (e.g., mergers & acquisitions, demergers, or changes of legal form)
- Risk management and compliance (particularly in the areas of data protection, human resources, finance, and tax)
- Corporate governance and corporate social responsibility
- Quality management and certification
- Innovation management and intellectual property (legal and business services to support investment projects)
- Contract negotiations and contract management (especially in international business transactions and collaborations)
- Interface between external specialists (e.g., hiring and instructing law firms and coordinating different legal accounts in various countries)

### **AN EFFICIENT USE OF YOUR TIME: A MASTER'S DEGREE AND PROFESSIONAL EXPERIENCE**

The Master's degree in Management and Law takes four semesters of part-time study to acquire. The weekly classroom sessions are held on two weekdays. At the same time, students complete applied research projects under the individual guidance of their instructors. Each semester ends with a one-week block seminar.

### **LINKING SPECIALIST AND METHODOLOGICAL COMPETENCE**

While solid professional knowledge is essential, it is not enough to succeed in the business world. Central to this Master's program is the competence to work in a manner that is systematic, structured, and solution-oriented. This requires analytical and conceptual abilities. You will learn to develop concepts and put them into practice in real projects.

### **THE COMBINED COMPETENCE OF TWO UNIVERSITIES**

The Master's degree program is offered in cooperation with the School of Business at the Lucerne University of Applied Sciences and Arts. This enables you to benefit from the expertise of two leading universities at the cutting edge of management and law.

# Program Structure

## Ideally suited to complement your professional activity

Your ability to work and study simultaneously is supported by a convenient timetable and a balanced student workload.

### SEMESTER STRUCTURE

The first semester lays the foundations. The next stages of the program build on this, guiding you through the focus areas of planning and strategy (second semester), organization and financing (third semester), and implementation and control (fourth semester). Instruction will be in German and English (approximately 50 percent of each).

### SCIENTIFIC APPROACH WITH PRACTICAL APPLICATION BENEFITS

In a rapidly changing world, innovative solutions to new problems are in constant demand. The Master's degree program

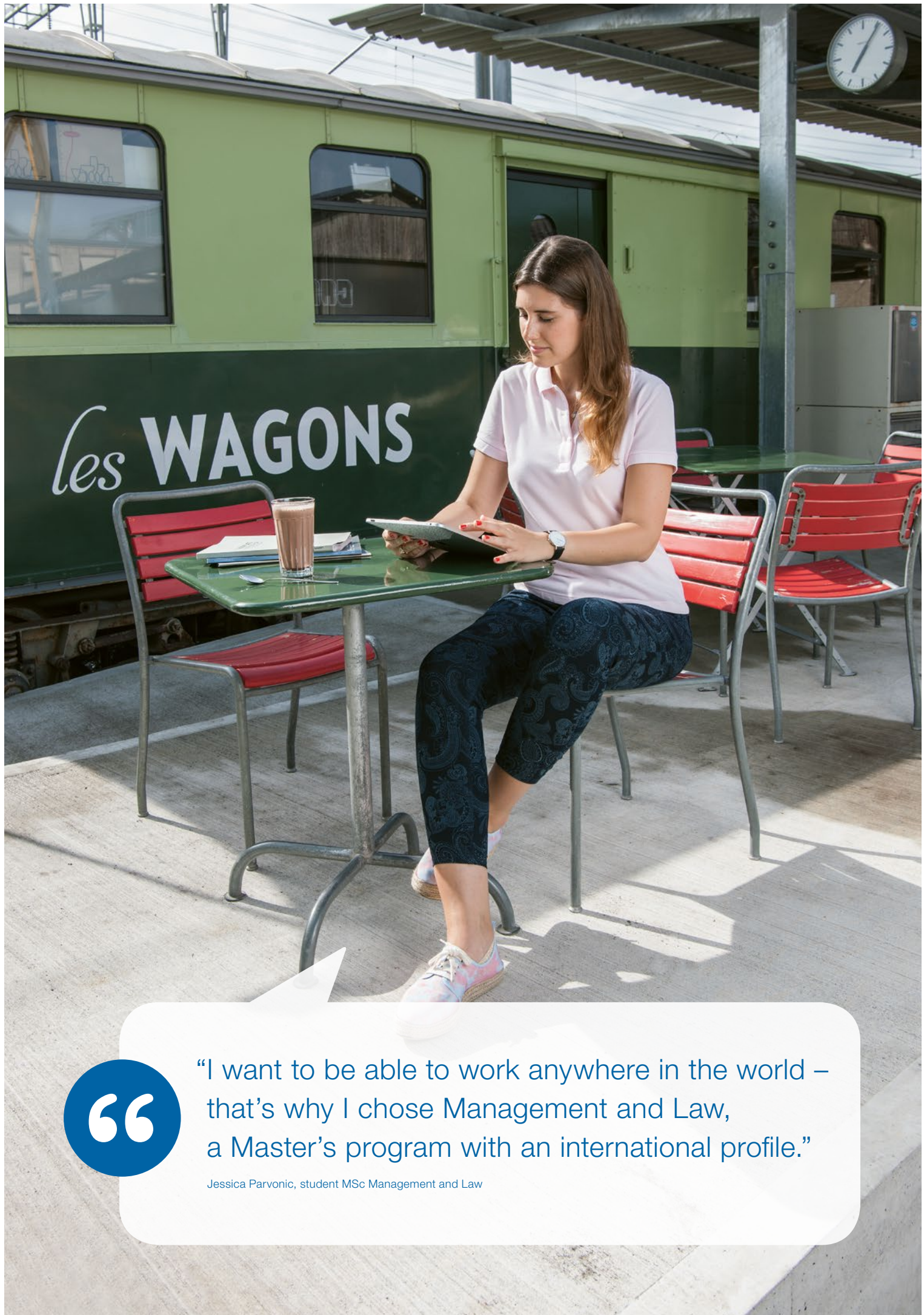
enables you to analyze problems scientifically and comprehensively and, based on this, propose practical solutions. You will learn to deal critically with theories, models, and scientific findings and to assess their application benefits.

An essential part of your studies will consist of application-oriented research, while your topic choices will enable you to specialize and thereby develop a personal competence profile. You will receive personal guidance and support from your instructors.

### MODULE OVERVIEW

|  |   |   |   |  |
|--|---|---|---|--|
| <b>Semester 1: Foundations</b>                 | <b>International Economics and Politics</b><br>6 ECTS credits | <b>Legal Risk Management and Corporate Governance</b><br>6 ECTS credits | <b>Conceptual and Scientific Work</b><br>6 ECTS credits                   | <b>Practical Research Projects</b><br>6 ECTS credits               |
| <b>Semester 2: Planning and Strategy</b>       | <b>Managing Strategy</b><br>6 ECTS credits                    | <b>Regulation and Competition</b><br>6 ECTS credits                     | <b>International Labor and Social Security Law</b><br>6 ECTS credits      | <b>Interdisciplinary Integration of Research</b><br>6 ECTS credits |
| <b>Semester 3*: Organization and Financing</b> | <b>Financial Management</b><br>6 ECTS credits                 | <b>International Corporate and Tax Law</b><br>6 ECTS credits            | <b>Scientific Exchange and International Conference</b><br>9 ECTS credits |  |
| <b>Semester 4: Implementation and Control</b>  | <b>Managing Change and Innovation</b><br>6 ECTS credits       | <b>Master's Thesis</b><br>15 ECTS credits                               |   |  |

\* Option: Exchange semester abroad



“

“I want to be able to work anywhere in the world – that’s why I chose Management and Law, a Master’s program with an international profile.”

Jessica Parvonic, student MSc Management and Law

# Modules

## With 12 modules and a Master's thesis to success

### **INTERNATIONAL ECONOMICS AND POLITICS**

The International Economics and Politics module explores economic interrelationships, economic and political trends, and the market developments that trigger change processes in companies.

---

### **LEGAL RISK MANAGEMENT AND CORPORATE GOVERNANCE**

The Legal Risk Management and Corporate Governance module focuses on the entrepreneurial perspective. Students learn about legal risks and the instruments to detect, minimize, and manage them.

---

### **CONCEPTUAL AND SCIENTIFIC WORK**

The Conceptual and Scientific Work module provides students with the theoretical and methodological background for the design of research projects and the evaluation of research results.

---

### **PRACTICAL RESEARCH PROJECTS**

The Practical Research Projects module enables students to conduct their own research together with industry partners and under the individual guidance of an instructor.

---

### **MANAGING STRATEGY**

The focus of the Managing Strategy module are the topics of strategy development, business model innovation, and strategic planning.

### **REGULATION AND COMPETITION**

The Regulation and Competition module focuses on dealing with government regulation and competition law requirements in an international context.

---

### **INTERNATIONAL LABOR AND SOCIAL SECURITY LAW**

The International Labor and Social Security Law module deals with the legal implications of strategic projects and change processes in an international context.

---

### **INTERDISCIPLINARY INTEGRATION OF RESEARCH**

In the Interdisciplinary Integration of Research module, students work in a multifunctional research team conducting a complex research and development project.

---

### **FINANCIAL MANAGEMENT**

The Financial Management module focuses on strategically oriented financial management as a prerequisite to efficient risk management and successful project and change management.

---

### **INTERNATIONAL CORPORATE AND TAX LAW**

The International Corporate and Tax Law module discusses corporate structure, tax planning, contract management, and intellectual property management in an international context.

### **SCIENTIFIC EXCHANGE AND INTERNATIONAL CONFERENCE**

In the Scientific Exchange and International Conference module, students participate in the preparation, organization, and implementation of a scientific exchange of research results at an international conference.

### **MANAGING CHANGE AND INNOVATION**

In the Managing Change and Innovation module, students develop the know-how to implement concrete strategic projects and manage change processes.

### **MASTER'S THESIS**

The Master's thesis tests a student's ability to explore economic and legal aspects of a practically oriented topic, develop his/her own solutions, and present them in a convincing manner.

## **Exchange Semester and Double-Degree Program**



In consultation with the Head of Program, students may undertake a study semester abroad at one of our partner universities during their third semester of study.

In one or two additional semesters, students can also acquire a second Master's degree abroad, such as a "Droit européen et international des affaires" Master's degree at Université Paris Dauphine, or an LLM in corporate law in an international context from the Berlin School of Economics and Law.



# Accreditations and Rankings

## Your degree is internationally recognized

The SML is accredited by the AACSB and features in the prestigious Financial Times rankings, increasing the value of our Master's degrees on the international job market.

Our MSc program in Management and Law has the approval of the Swiss government. The degree is also recognized in the EU and many other countries.

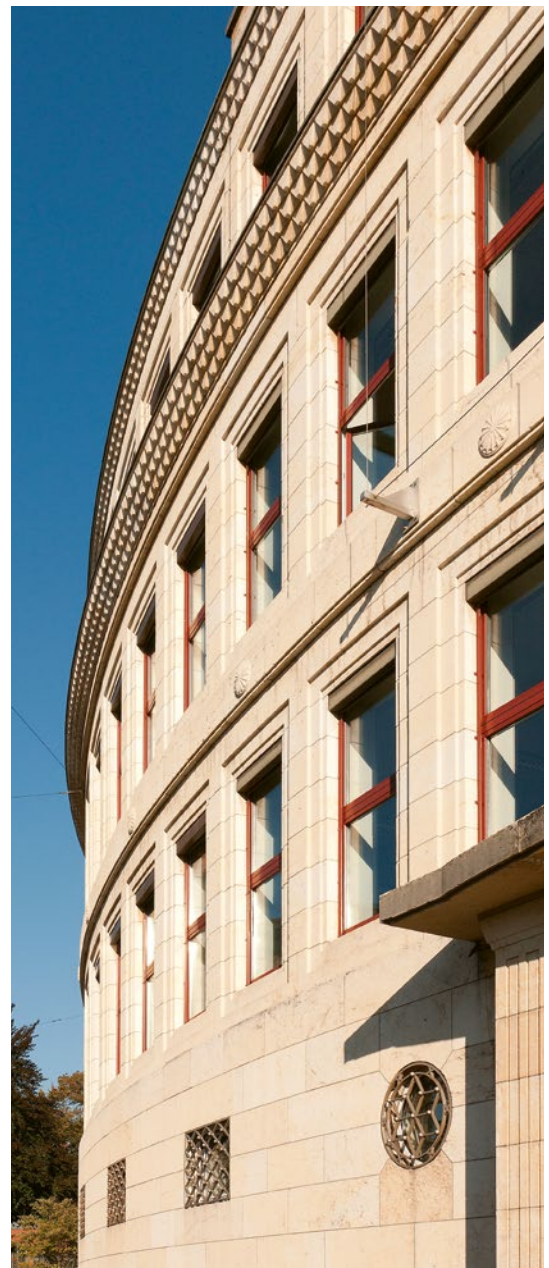
To ensure continuous quality improvement, the ZHAW School of Management and Law (SML) submits itself to regular scrutiny by international quality assurance organizations.

### **ASSOCIATION TO ADVANCE COLLEGIATE SCHOOLS OF BUSINESS (AACSB)**

Since 2015, the SML has been proud to be accredited by the AACSB. Only around 6 percent of all business schools worldwide bear this seal of quality from the leading accreditation body in this field.

### **FINANCIAL TIMES RANKINGS**

The SML is listed in the renowned rankings by the business newspaper Financial Times. It is a leading European business school and, with its Master of Science in International Business, offers one of the best Master's management programs in the world.





# An International Outlook

## Your opportunity to study abroad

A semester abroad offers students an opportunity to build an international network, advance their foreign language skills, and experience their subject from a different perspective.

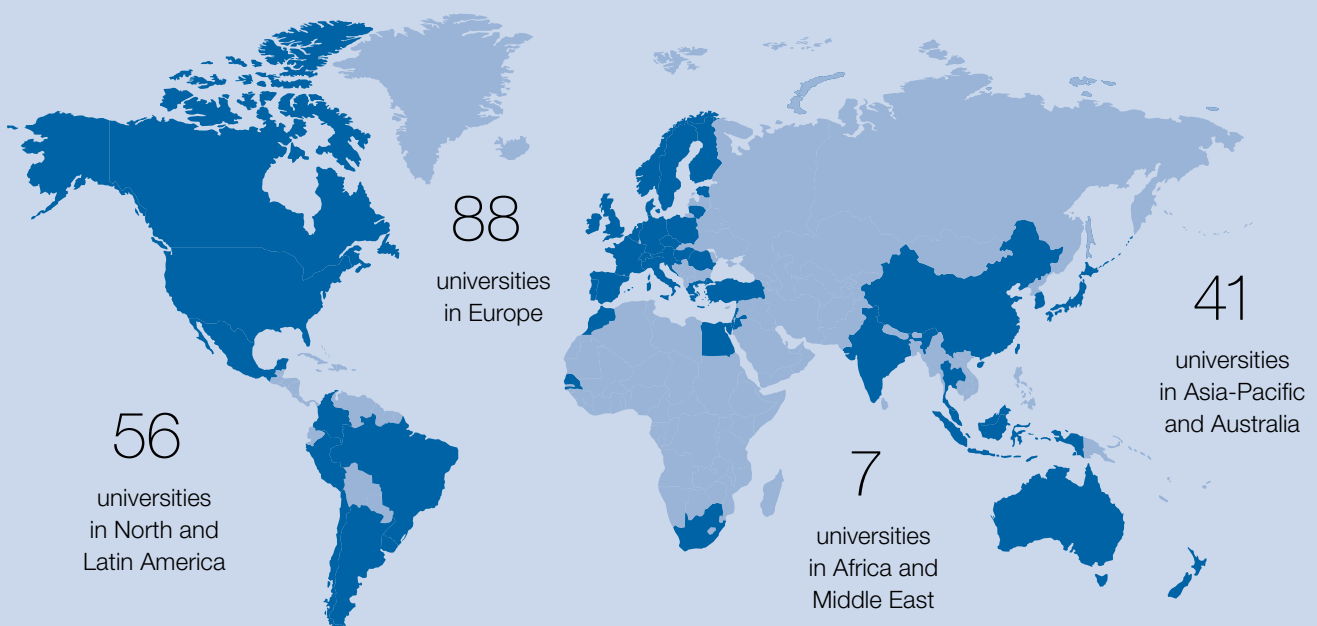
We support international student exchanges and aim to recognize our students' academic performance while abroad as fully as possible. Students can usually continue their regular studies after a stay abroad without delay. Student exchanges usually take place during the third semester of study. Information about the possibilities and conditions of participation is provided in the first semester.

As a general rule, no additional course fees are payable to partner universities due to a bilateral agreement between the ZHAW School of Management and Law (SML) and the respective partner university. Exchanges with universities in EU countries are regulated by the Swiss-European Mobility Programme (formerly Erasmus).

A large number of universities in North and Latin America, Africa and Middle East, Asia, and Oceania also have suitable exchange programs. Our network currently includes over 190 partner institutions worldwide.

In addition, the SML has agreements with individual universities where students can complete an exchange semester on a fee-paying basis. In such cases, course fees are payable to the partner university while, in return, the SML waives its fee for the duration of the exchange. Through various mobility grants, students may also apply for financial support.

>>> [www.zhaw.ch/sml/outgoing](http://www.zhaw.ch/sml/outgoing)





“

“Interdisciplinary training is the future. I enjoy teaching in this excellent Master’s program with its unique combination of management and law.”

Prof. Dr. Xiang Yu, Professor at Huazhong University of Science and Technology, Wuhan (China), Regular Guest as Visiting Professor at ZHAW School of Management and Law

# Practical Relevance

## Our Master's programs are practical in orientation

At the ZHAW School of Management and Law (SML), practical orientation is at the heart of everything we do. This applies to our research and consulting activities as well as to our degree programs and continuing education courses, which are oriented consistently to the demands of the professional world.

---

> 170

companies represented  
at Graduate Day

---

> 340

EU, SNF, and Innosuisse  
projects since 2008

---

> 7,100

publications  
since 2010

---

### **BUILDING COMPETENCE. CROSSING BORDERS.**

As part of a university of applied sciences, the ZHAW School of Management and Law (SML) is required to conduct applied research, and it is the needs of commerce and industry which determine our objectives. In collaboration with private and public organizations, our institutes and centers develop innovative and science-based solutions to current challenges in business and administration. True to our guiding principle "Building Competence. Crossing Borders," we not only combine our own expertise, but, if necessary, we also cross geographic and functional boundaries. To help us achieve our goals, we draw on the expertise of other departments at Zurich University of Applied Sciences (ZHAW), our industry partners, and more than 190 partner universities worldwide.

Our research findings are characterized by a high degree of practical relevance and rapid implementation, flowing consistently into our teaching and consulting activities. It allows our instructors to present real practice cases in the classroom and to derive interesting practical exercises from them. In this way, students can work on realistic case studies, applying the theories they have learned, and be prepared for the challenges of the business world – yet another reason why a degree program at the SML leads directly to professional aptitude.

To meet all performance areas, the SML places great emphasis not only on academic qualifications but also on extensive professional and leadership experience when recruiting new faculty members. The broad network of contacts which instructors bring with them is also of benefit to the students. Students commissioned by companies to write their Master's thesis may later find employment within that or a similar organization. Also, SML Career Services supports students in preparing effectively for their next career step on completion of their studies.

# Campus Plus

## What else you can expect

In addition to your studies, ZHAW and the cities of Zurich and Winterthur have plenty to offer.



### ACCOMMODATION

The Student Accommodation Association (WOKO) is responsible for negotiating affordable student housing in Winterthur and Zurich. The Youth Residential Network (JUWO) also offers affordable accommodation. Further offers are available at [students.ch](http://students.ch), [wgzimmer.ch](http://wgzimmer.ch), and on regular online real estate platforms.

>>> [www.woko.ch](http://www.woko.ch)

>>> [www.students.ch](http://www.students.ch)

>>> [www.juwo.ch](http://www.juwo.ch)

>>> [www.wgzimmer.ch](http://www.wgzimmer.ch)



### ALIAS

All ZHAW students are members of Alias. This association represents them in dealings with the university and publishes the student magazine "Brainstorm." By organizing student parties and events, Alias contributes to a vibrant campus life. The association can also be contacted for all kinds of student concerns.

>>> [www.alias-zhaw.ch](http://www.alias-zhaw.ch)



### ALUMNI SERVICES

Alumni Services acts as the link between current and former ZHAW School of Management and Law students, so it is your first point of contact for all networking issues. At Alumni Services, we coordinate, give advice, provide support, and help you build and maintain a strong network of business relationships. As a graduate of a Master's program, you automatically become an alumna or alumnus of the ZHAW School of Management and Law. This means you will continue to be informed about the university and our executive education opportunities even after graduation.

>>> [www.zhaw.ch/sml/alumni](http://www.zhaw.ch/sml/alumni)





### BETA GAMMA SIGMA

Membership of the international honor society Beta Gamma Sigma (BGS) is the highest recognition that business students at an AACSB-accredited university can achieve. It is reserved exclusively for students who fulfill the strict requirements of BGS during their studies.



### CAMPUS WINTERTHUR

The SML buildings are situated in the center of the city of Winterthur. The train station is within easy walking distance. The University Library at "Sulzer Areal," a former industrial site, has workstations for over 650 students and state-of-the-art infrastructure. A variety of different food outlets across the campus provides quick meals as well as offering a place to relax.



### CAREER SERVICES

SML Career Services helps you make a successful transition from student to professional and supports your personal career development. Our services include:

- Events and workshops (Long Night of Careers, Rotation Dinner, etc.)
- Career counseling (CV and LinkedIn checks, career coaching, video interview training, online assessment training, etc.)
- Website (job exchange, Tips & Tools, CV database, etc.)

>>> [career.sml.zhaw.ch](http://career.sml.zhaw.ch)



### MYCAMPUS

myCampus not only offers you access to a unique network of experts but also to numerous valuable services. From individual consulting offers to instructive workshops and exclusive events, you will find everything you need with us for your professional and personal development. Become part of our community now!

>>> [mycampus.sml.zhaw.ch](http://mycampus.sml.zhaw.ch)



### SPORTS AND FITNESS

From A for Aikido to Z for Zumba, ASVZ (Academic Sports Association Zurich) offers over 120 different sports in Winterthur and Zurich as an active way to achieve a healthy work-life balance. Benefit from an extensive infrastructure with modern sports equipment as well as knowledgeable, professional supervision. ASVZ membership is included in your semester fee. >>> [www.asvz.ch](http://www.asvz.ch)



# Admission Requirements

## Early registration is strongly recommended

Places on the program are allocated in the order in which the complete application documents are received.

### ADMISSION REQUIREMENTS

The Master's degree program in Management and Law is aimed at students with a Bachelor's degree (worth at least 180 ECTS credits) in Business Law. Admission is also open to graduates in business administration, law, or another course of study with a pronounced legal component; this is subject to an applicant's ability to acquire the necessary additional qualifications. In addition to solid knowledge of national business law in Switzerland or another country, applicants also need the following:

- Knowledge of the systems of international business law, EU law, and Anglo-American law
- Oral and written command of German and English at C1 level (CEFR\*)
- The ability and inclination to conduct applied scientific work at Master's level

Admission decisions, including the decision of additional qualifications that may be required, will be made by the Head of Program on a case-by-case basis.

### REGISTRATION

Applications for this course of study are received from mid-October. For an online registration, you will need:

- Proof of academic qualifications (diploma, diploma supplement, grades, ECTS transcripts)
- Letter of motivation
- Proof of language skills
- Curriculum vitae with photo
- Digital passport photo
- Vocational baccalaureate (Berufsmatura) or academic baccalaureate (Matura) certificate
- Valid identity card/passport
- Copy of your Bachelor's thesis or of a seminar paper

### REGISTRATION DEADLINE

The closing date for applications to begin a degree program in September is usually the end of May. Please note the current, definite dates on our online portal. Applicants who have not yet completed their Bachelor's degree at the time of registration may submit the missing documents once they become available. Admission interviews are conducted on an ongoing basis after receipt of the applications. Early application is recommended since places on the program are assigned on a first-come-first-served basis.

### ADDITIONAL INFORMATION

If you have any questions about the registration procedure, please contact us:

ZHAW School of Management and Law  
Student Services  
Phone +41 58 934 68 68

[studentservices.sml@zhaw.ch](mailto:studentservices.sml@zhaw.ch)

We will be happy to answer your questions at one of our information events or in a consultation meeting.

>>> [www.zhaw.ch/sml/info-master-en](http://www.zhaw.ch/sml/info-master-en)

>>> [www.zhaw.ch/sml/consultation-master](http://www.zhaw.ch/sml/consultation-master)

**Register now**

Use this URL to register online:

>>> [www.zhaw.ch/sml/registration-master](http://www.zhaw.ch/sml/registration-master)



# The SML in Figures

## Our profile for your success

The ZHAW School of Management and Law (SML), established in 1968, is one of Switzerland's leading business schools. It offers internationally recognized Bachelor's and Master's programs and a comprehensive range of continuing education programs, as well as being actively engaged in innovative research and development projects.

5

Bachelor's degree programs (BSc),  
9 specializations

7

Master's degree programs (MSc),  
5 specializations

&gt;170

continuing education  
programs

631

members of faculty  
and staff

9,200

students in BSc, MSc, and  
continuing education programs

&gt;29,000

graduates  
since 1968

200

classes at the SML

37%

of modules taught in English

413

lecturers at the SML



Zurich University  
of Applied Sciences

## School of Management and Law

St.-Georgen-Platz 2  
P.O. Box  
8401 Winterthur  
Switzerland

[www.zhaw.ch/sml](http://www.zhaw.ch/sml)



swissuniversities

