



School of
Management and Law

Welcome to ZHAW SML

BSc International Management



Dr. Michael J. Kendzia

bsc-im.sml@zhaw.ch

14 September 2023

Dean's - Welcome



Your journey



The ZHAW School of Management and Law

FT

MASTERS IN
MANAGEMENT
2023 RANKING



Studying is like running hurdles..

.. and meeting an international standard.



Team



Dr. Michael J. Kendzia

Program Director

BSc International Management

Ph: +41 (0)58 934 46 22

Contact: bsc-im.sml@zhaw.ch



Dr. Jeremy Dela Cruz

Deputy Program Director

MSc International Business & BSc International Management

Ph: +41 (0)58 934 40 98

Contact: bsc-im.sml@zhaw.ch



Ms. Susan Bergen

Operations Manager

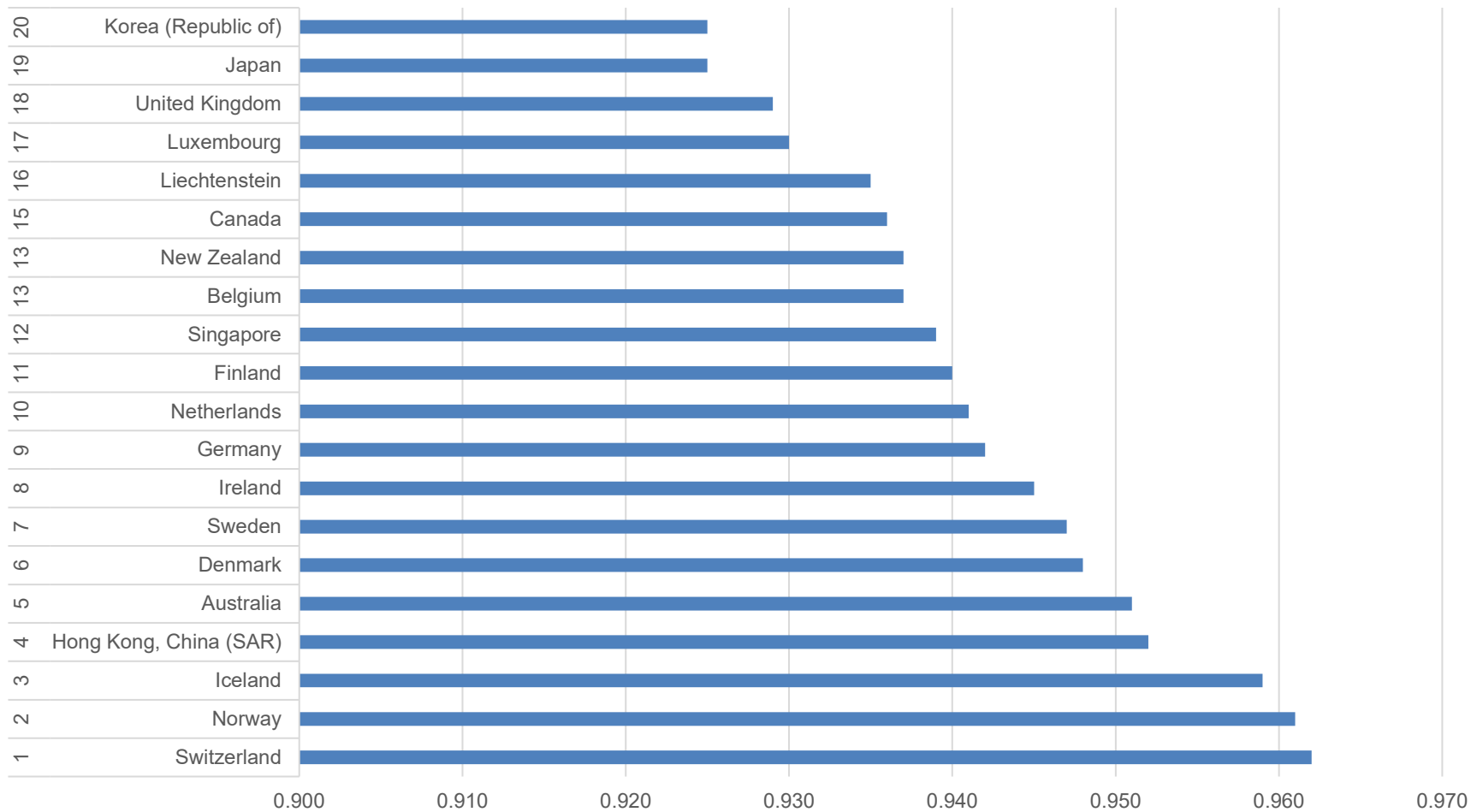
BSc International Management

Ph: +41 (0)58 934 46 50

Contact: bsc-im.sml@zhaw.ch

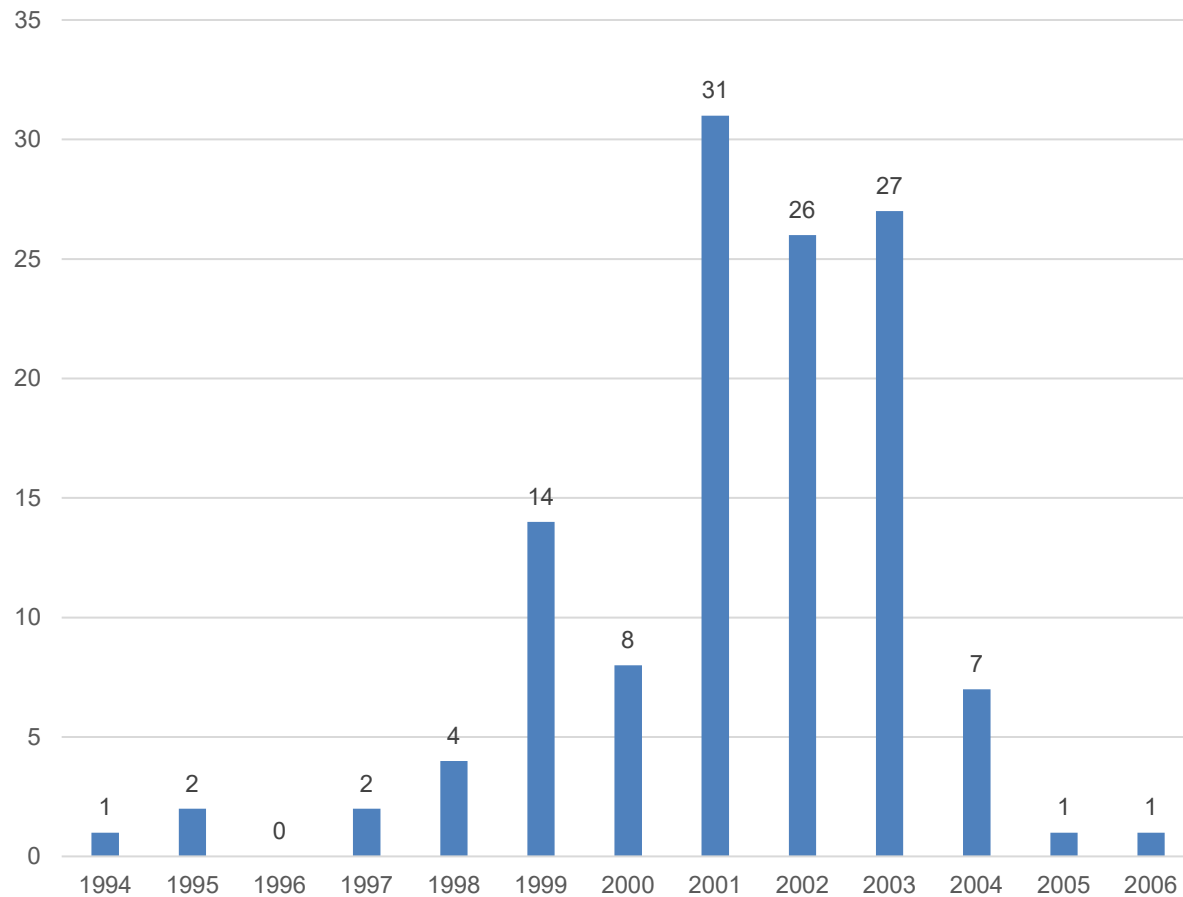
Welcome to Switzerland!

Human Development Index (2021)

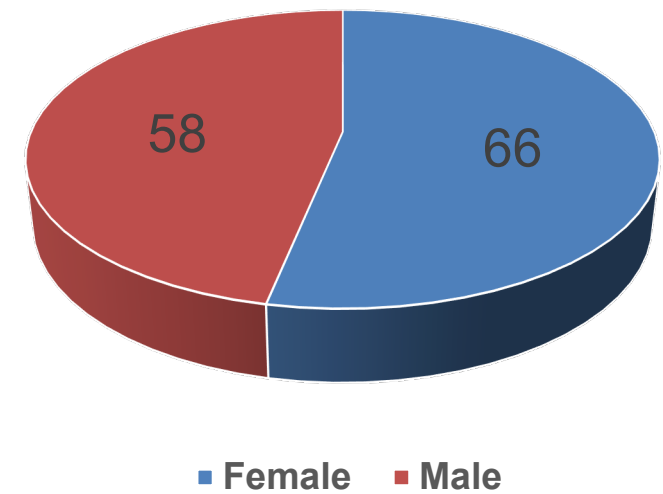


BSc IM Cohort 2023

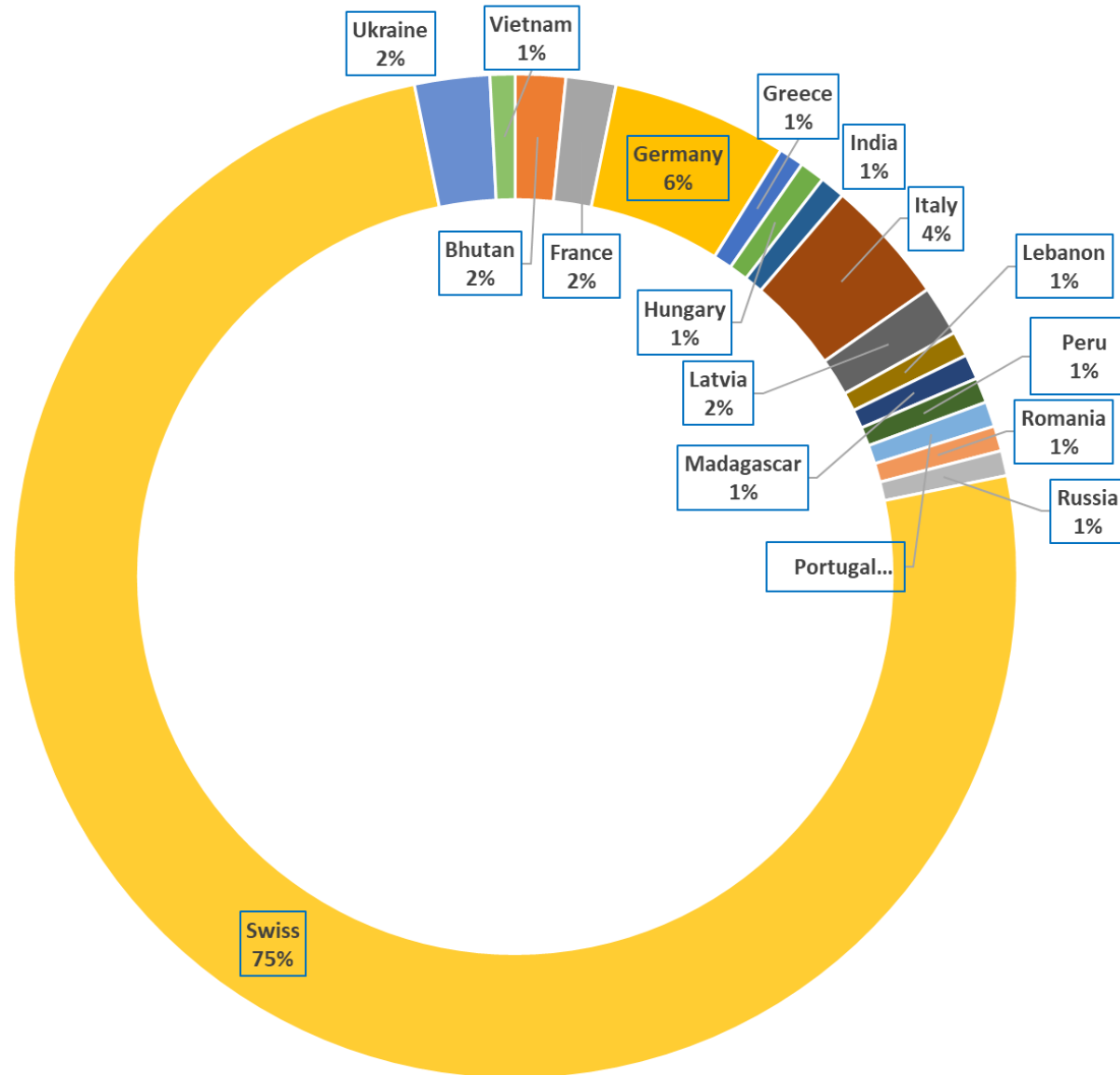
Year of birth



Diversity



BSc IM Cohort 2023



17 different nationalities

Why do you study the BSc IM Program?

MENTIMETER

Access code: 1734 4521



Difference between school and a bachelor's degree

Studying is not a prepared meal



Cooperation between you and us (1)

- Schedule and deadlines are final – there are no extensions (tuition fee).
- ZHAW email is the official communication channel: ensure enough capacity to receive emails (no private emails).
- Make yourself familiar with the study- and examination regulations (guidelines).



Cooperation between you and us (2)

Our Values

- Freedom depends on responsibility
- Become part of the solution not part of the problem
- Acceptance / Appreciation / Approval
- Patience / Calmness
- Avoid emails / visit our office during office hours / no public chat room
- Principle of equal treatment (meet in person)



Escalation Line



Student

1. Lecturer

2. Head of BSc IM Program

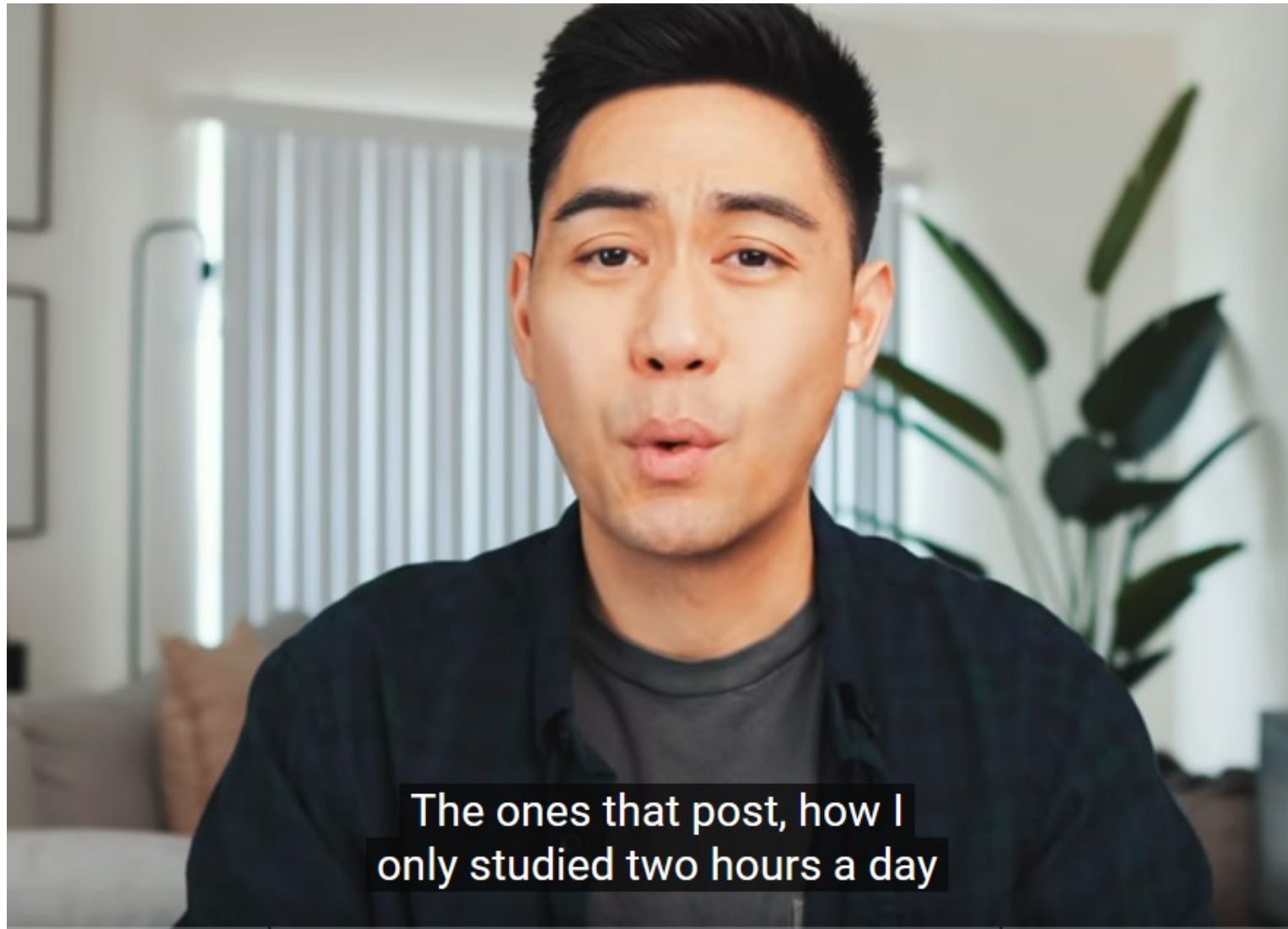
3. Head Academic Studies

4. Head of Department

5. Dean

Please choose face-to-face interactions, rather than emails.

Define your learning goals



<https://youtu.be/24ecRKfEweU?t=44>

BSc International Management

Our target & your mission

...my action was

...my action was

Assessment of Competence			...insecure ...imperfect ...not target oriented ...ineffectual ...unstructured	...partly safe / clear ...partly complete ...partly goal-oriented ...partially effective	...mostly safe / clear ...mostly complete ...mostly goal-oriented ...mostly effective	...safe / clear ...complete ...goal-oriented ...effective ...structured
		1	2	3	4	
Independent, own-initiative	↑ L e v e l ↑	4				4/4
Independent		3				
Guided		2				
With Support		1				

The Assessment

Module Table for Bachelor's Degree Programs International Management (IM) from 2013/2014

To download the module descriptions, click on the colored boxes below.

6 30 ECTS	Elective 3 ECTS	Elective 3 ECTS	Elective 3 ECTS	Elective 3 ECTS	Elective 3 ECTS	Bachelor's Thesis 15 ECTS
5 30 ECTS	International Strategic Management 6 ECTS	Managing People in an Int. Context 6 ECTS	Integration II - Fieldwork 6 ECTS	Sustainable Corporate Responsibility 3 ECTS	Elective 3 ECTS	International Business Project 6 ECTS
3 & 4 Study Abroad 60 ECTS	Operation Process Mgmt Modules 10% (6 ECTS)	Intermediate Finance Module 10% (6 ECTS)	Policy, Law, or Relations 10% (6 ECTS)		Electives Regional and Host National Business Modules OR Host Institution Credited Internship 30% (18 ECTS)	
	Intermediate Marketing Module 10% (6 ECTS)	Intermediate Accounting Module 10% (6 ECTS)	Intermediate Economics Module 10% (6 ECTS)	Culture or Foreign Lang. 10% (6 ECTS)		
2 30 ECTS	Markets & Marketing 6 ECTS	Introduction to Finance 6 ECTS	Economics 6 ECTS	Corporate Culture & Cross-Cultural Management 6 ECTS	Integration I - Business Case 6 ECTS	
1 30 ECTS	International Business & Management 6 ECTS	Introduction to Accounting 6 ECTS	Quantitative Analysis in Biz 6 ECTS	International Environment of Business 6 ECTS	Project Mgmt & Writing Techniques 6 ECTS	

Assessment Year

Why Assessment Year?

- Provides a foundation in international management
- Enabling you to continue your studies and build upon these fundamentals
- Gives us an opportunity to decide if we are a good match

How to pass the Assessment Year?

- No module with a grade of 1.0
- Not more than *Minus 12 ECTS credit points*
- Example: if your final grade is 3.5, take the difference $4.0 - 3.5 = 0.5$
 $0.5 * 6 \text{ ECTS} = - 3 \text{ ECTS}$

Deep learning



<https://youtu.be/IIU-zDU6aQ0?t=4>

Our highlight: Study Year Abroad



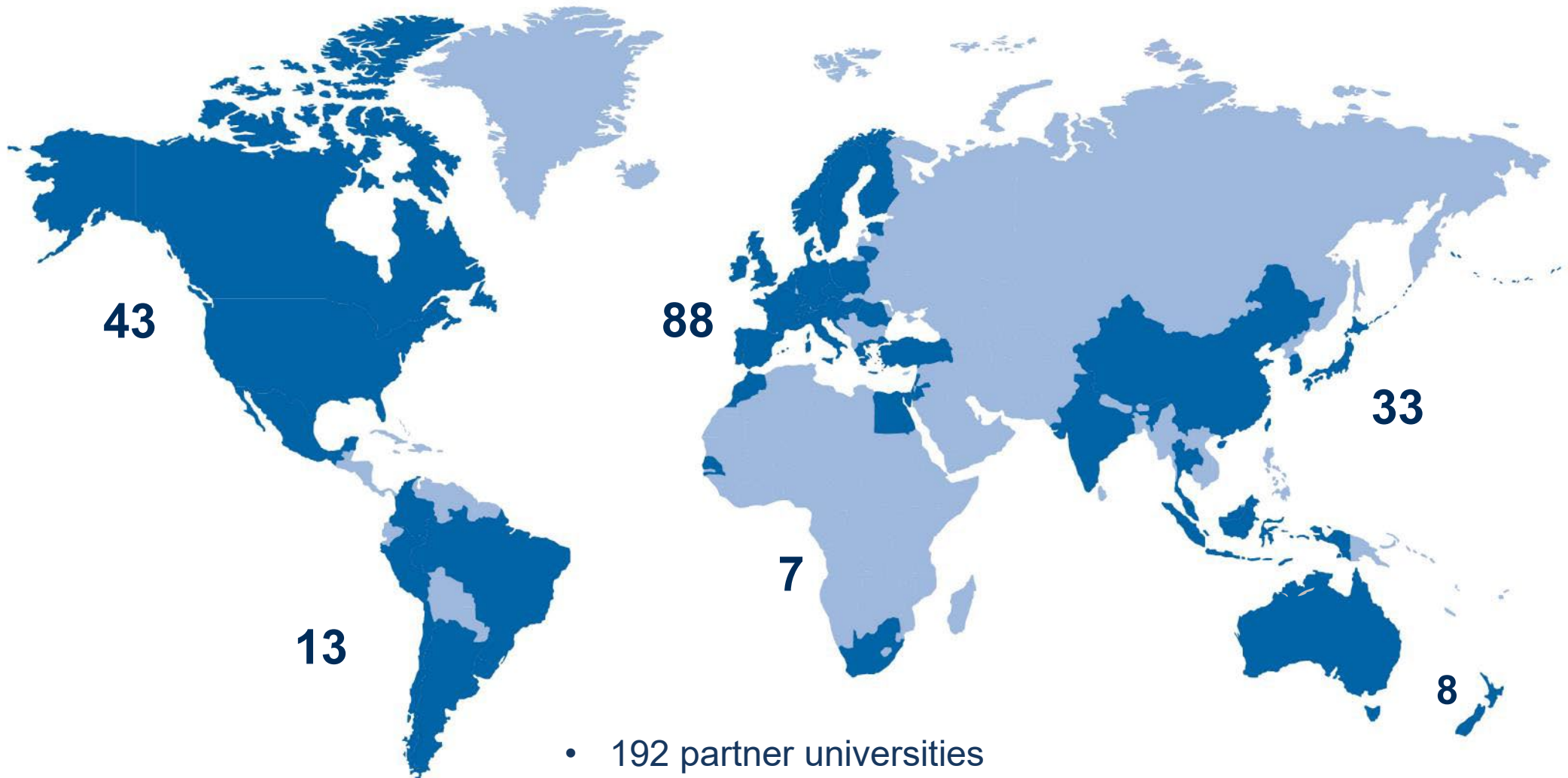
Study Year Abroad

Module Table for Bachelor's Degree Programs International Management (IM) from 2013/2014

To download the module descriptions, click on the colored boxes below.

6 30 ECTS	Elective 3 ECTS	Elective 3 ECTS	Elective 3 ECTS	Elective 3 ECTS	Elective 3 ECTS	Bachelor's Thesis 15 ECTS
5 30 ECTS	International Strategic Management 6 ECTS	Managing People in an Int. Context 6 ECTS	Integration II - Fieldwork 6 ECTS	Sustainable Corporate Responsibility 3 ECTS	Elective 3 ECTS	International Business Project 6 ECTS
3 & 4 Study Abroad 60 ECTS	Operation Process Mgmt Modules 10% (6 ECTS)	Intermediate Finance Module 10% (6 ECTS)	Policy, Law, or Relations 10% (6 ECTS)		Electives Regional and Host National Business Modules OR Host Institution Credited Internship 30% (18 ECTS)	
	Intermediate Marketing Module 10% (6 ECTS)	Intermediate Accounting Module 10% (6 ECTS)	Intermediate Economics Module 10% (6 ECTS)	Culture or Foreign Lang. 10% (6 ECTS)		
2 30 ECTS	Markets & Marketing 6 ECTS	Introduction to Finance 6 ECTS	Economics 6 ECTS	Corporate Culture & Cross-Cultural Management 6 ECTS	Integration I - Business Case 6 ECTS	
1 30 ECTS	International Business & Management 6 ECTS	Introduction to Accounting 6 ECTS	Quantitative Analysis in Biz 6 ECTS	International Environment of Business 6 ECTS	Project Mgmt & Writing Techniques 6 ECTS	

SML Partner Network



- 192 partner universities
- 30 in FT 'Best European Business Schools'
- 160 Accredited Business Schools
- 37 Triple Accredited (AACSB, EQUIS, AMBA)

Background Susan Bergen

After school

AuPair, Tel Aviv - Student Job, Golf Club Hotel in Gloucestershire

Study

Studied/lived in Japan: 1.5 & ½ year - Master in Japanese & German Studies, FU Berlin

Work

German/Japan. Youth & adult exchange, JDZB, Berlin

2001 Switzerland: Sulzer AG, ZHAW Ressort Internationales & Internat. Office at SML

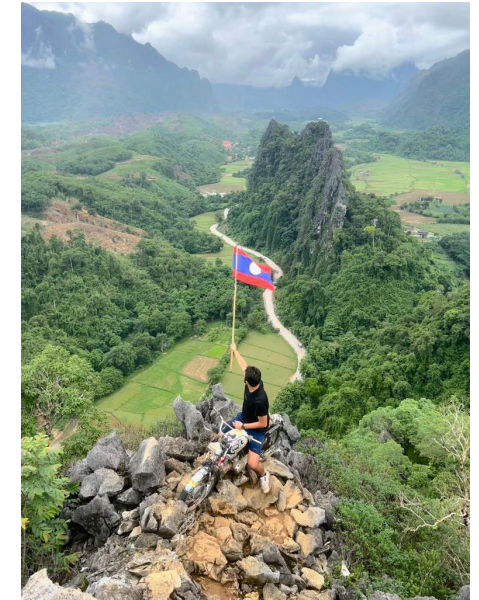
Main point of contact for your SYA

- November: Preparation will start with an information session
- Learning Agreement/Learning goals
- Out tool: Mobility-Online
- In close cooperation with the International Office



Buddies 2023/24 - Highlights of their SYA - Sandro

University of Cincinnati



Buddies 2023/24 - Highlights of their SYA - Aimee

Universidade Católica Portuguesa - Campus Porto



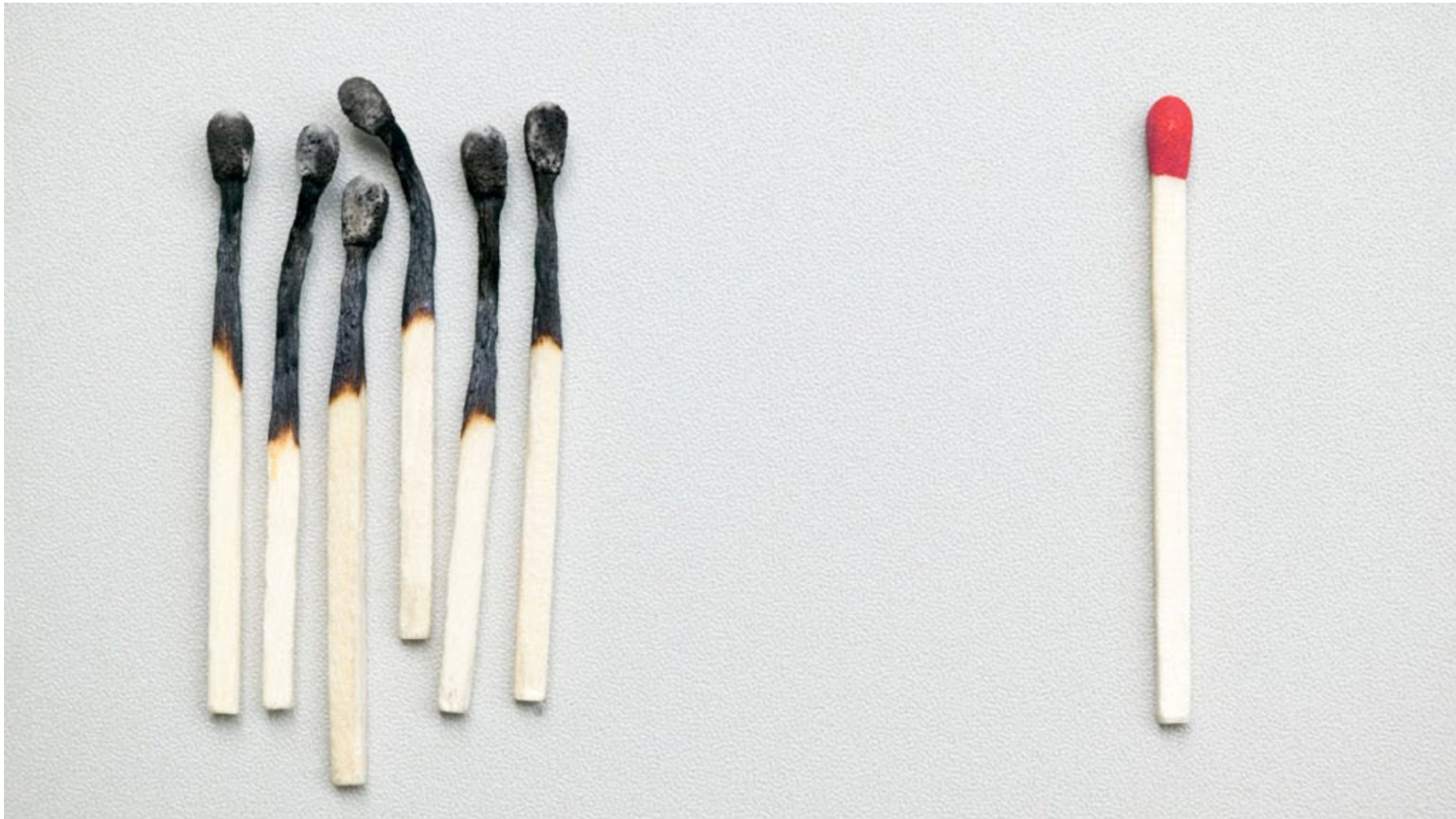
Main study period

Module Table for Bachelor's Degree Programs International Management (IM) from 2013/2014

To download the module descriptions, click on the colored boxes below.

6 30 ECTS	Elective 3 ECTS	Elective 3 ECTS	Elective 3 ECTS	Elective 3 ECTS	Elective 3 ECTS	Bachelor's Thesis 15 ECTS
5 20 ECTS	International Strategic Management 6 ECTS	Managing People in an Int. Context 6 ECTS	Integration II - Fieldwork 6 ECTS	Sustainable Corporate Responsibility 3 ECTS	Elective 3 ECTS	International Business Project 6 ECTS
3 & 4 Study Abroad 60 ECTS	Operation Process Mgmt Modules 10% (6 ECTS)	Intermediate Finance Module 10% (6 ECTS)	Policy, Law, or Relations 10% (6 ECTS)	Electives Regional and Host National Business Modules OR Host Institution Credited Internship 30% (18 ECTS)		
	Intermediate Marketing Module 10% (6 ECTS)	Intermediate Accounting Module 10% (6 ECTS)	Intermediate Economics Module 10% (6 ECTS)			
2 30 ECTS	Markets & Marketing 6 ECTS	Introduction to Finance 6 ECTS	Economics 6 ECTS	Corporate Culture & Cross-Cultural Management 6 ECTS	Integration I - Business Case 6 ECTS	
1 30 ECTS	International Business & Management 6 ECTS	Introduction to Accounting 6 ECTS	Quantitative Analysis in Biz 6 ECTS	International Environment of Business 6 ECTS	Project Mgmt & Writing Techniques 6 ECTS	

Please take good care of yourself



Please take good care of yourself



When the going gets tough

Support & Guidance at ZHAW for all students

Psychotherapy, Counselling and Crisis Intervention

psychologischeberatung@zhaw.ch

- It is anonymous, there is confidentiality no matter if e.g., private problems or difficulties in studies.
- Offer several workshops, for e.g. Relaxed for success, Exam anxiety, Procrastination



Students with special needs or chronic illness

- barrierefrei@zhaw.ch
- advice regarding all study-related and procedural issues related to special needs and/or chronic illness
- support in applying for compensation when assignments or exams cannot be submitted/taken in the stipulated form
- support in seeking and financing student assistance
- adjustments to rooms/schedules to ensure a barrier-free study environment

Graduation Ceremony 2023



Where to be next



BSc International Management

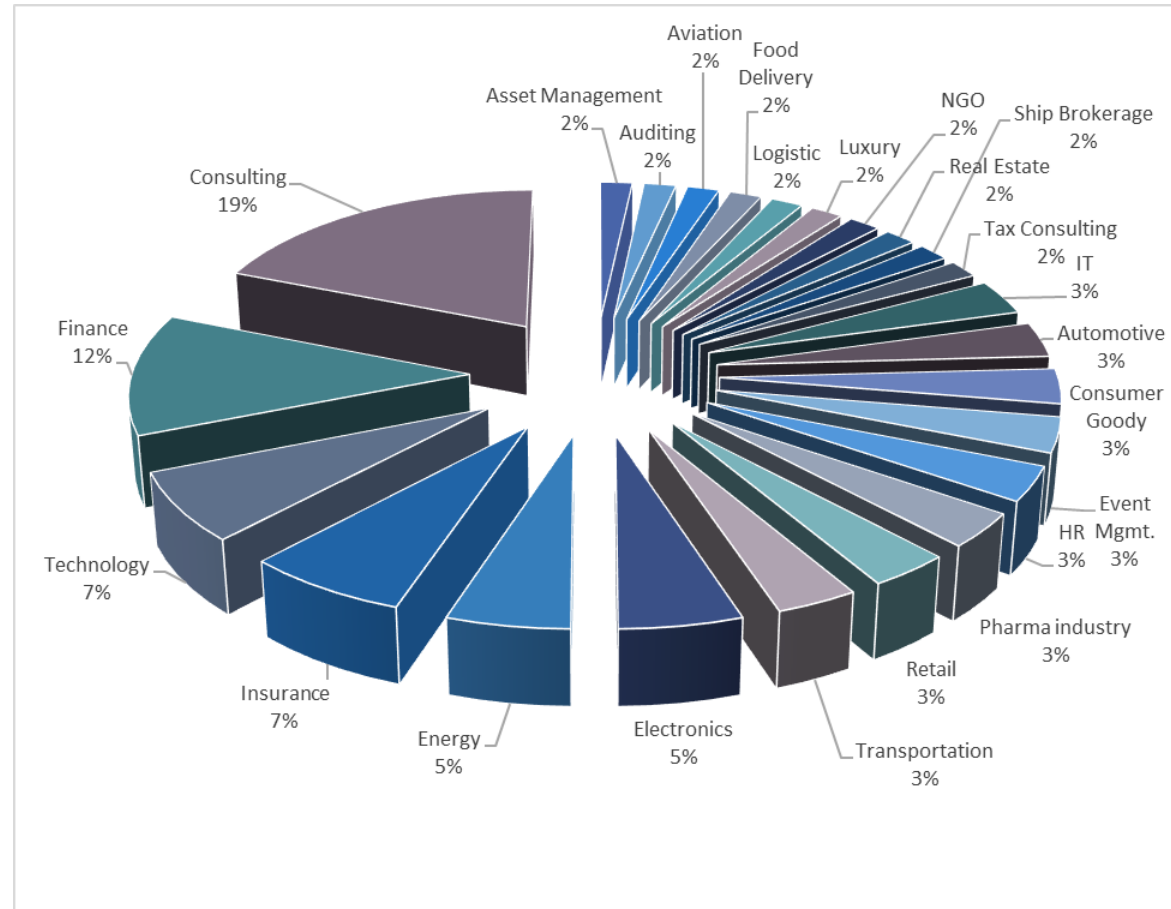
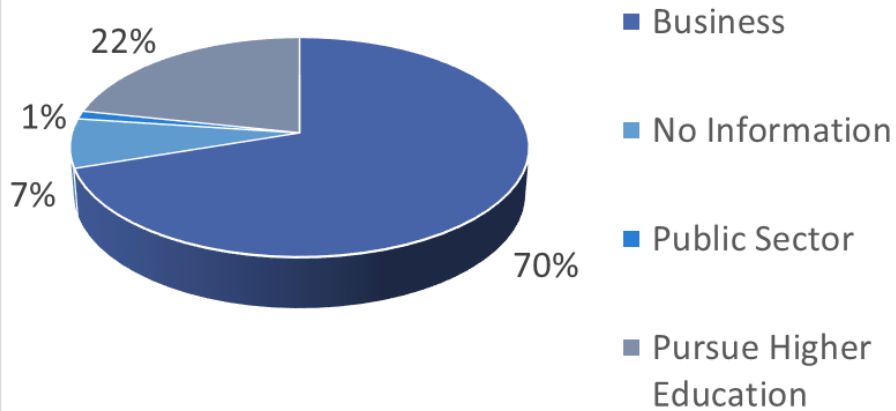


Journey - to be continued ... BSc IM Graduates 2022

Anzahl von Current Occupation

BSc IM Graduates 2022

Business / Public Sector / ...



Sports, fun, and friends...



usgang



The difference is very subtle

Welcome to the BSc International Management Program!

... and enjoy your studies at ZHAW SML

