

International Relations

At a Glance 2023/2024



Building Competence. Crossing Borders.

Welcome

The ZHAW School of Management and Law is one of Switzerland's leading business schools, with strengths in finance, management, law, public sector, and international business.

This brochure introduces you to the ZHAW School of Management and Law (SML) and offers you an overview of the work of our International Relations and International Office teams, the programs and modules offered in English, and our extensive network of partner universities.

Top reasons for your students to choose to study at the ZHAW School of Management and Law:

- an internationally accredited and ranked business school
- academic programs of the highest quality
- over 130 modules taught in English
- close proximity to Zurich, one of Europe's major financial centers
- the great beauty of Switzerland's natural environment

Experience first-hand the outstanding quality of Swiss higher education. We look forward to welcoming you and your students to Switzerland and to our university.



In 2015, the SML became the first business school of a Swiss university of applied sciences to be accredited by the Association to Advance Collegiate Schools of Business (AACSB). A mere six percent of the world's business schools have managed to achieve this prestigious standard of achievement awarded by the most significant international accreditation institution for business schools.

Michael Farley
Head of International
Development & Projects

Greta Gnehm
Head of International Relations

Benno Baumberger
Operations Manager
International Office

FT EUROPEAN
BUSINESS SCHOOLS
2022 RANKING

FT MASTERS IN
MANAGEMENT
2022 RANKING

FT EXECUTIVE
EDUCATION
2023 RANKING

The ZHAW School of Management and Law features in the prestigious Financial Times rankings: Not only is it among the 90 leading European business schools, it also offers one of the 90 best Master's programs in management worldwide and one of the 75 best open-enrollment executive education programs worldwide.

We offer incoming students the best of Switzerland: high-quality teaching, outstanding infrastructure, and academic theory combined with real-world relevance from experts directly involved in their field. A unique experience in an exceptional country that is first-rate, safe, and welcoming: Switzerland!

Table of Contents

- 5 FIVE REASONS TO STUDY AT THE ZHAW SCHOOL OF MANAGEMENT AND LAW
- 6 ORGANIZATION
- 8 BACHELOR'S MODULES IN ENGLISH ACADEMIC YEAR 2023/2024
- 12 MASTER'S MODULES IN ENGLISH ACADEMIC YEAR 2023/2024
- 14 ACADEMIC PROGRAM
- 18 WELCOME TO THE HEART OF EUROPE
- 19 CAMPUS PLUS
- 20 OUR INTERNATIONAL PARTNER NETWORK
- 22 INTERNATIONAL PARTNER UNIVERSITIES
- 31 THE SML IN FIGURES



Five Reasons to Study at the ZHAW School of Management and Law

1

AACSB ACCREDITATION

In May 2015, the ZHAW School of Management and Law (SML) became the first business school of a Swiss university of applied sciences to be accredited by AACSB – a much sought-after seal of quality on the international job market. The quality of our programs is regularly reviewed by AACSB.

2

STAYING CONNECTED

Our campus is located in Winterthur, in close proximity to the financial and business center of Zurich and well connected to the public transportation network. In addition, the close ties the SML has to companies and organizations as well as its extensive alumni network will give you excellent career prospects.

3

PRACTICAL ORIENTATION

At the ZHAW School of Management and Law (SML), not only are instructors academically qualified, but they also have extensive practical experience as well as access to a broad professional network. Teaching is oriented towards practical experience. In addition, the program provides opportunities for you to meet potential future employers.

4

INNOVATIVE TEACHING AND LEARNING

Teaching at the SML is continually being developed and updated to incorporate modern teaching methods. Digitally supported learning makes content descriptive, enables learning to be more flexible in terms of time and place, and integrates career-relevant media tools into the study program.

5

AN IMPRESSIVE NATURAL ENVIRONMENT

Switzerland is famous for its outstanding natural beauty and diverse countryside. Adventurous hikes in the mountains, river and lake cruises, world famous ski regions, and a Mediterranean atmosphere in the country's southern region – these are just some of the reasons to choose Switzerland and the ZHAW School of Management and Law (SML) as a study destination.

Organization

Your contacts at International Relations



Michael Farley
Head of International
Development & Projects

Phone +41 58 934 46 15
michael.farley@zhaw.ch



Greta Gnehm
Head of International
Relations

Phone +41 58 934 42 30
greta.gnehm@zhaw.ch



Lena Abadesso
International Relations
Coordinator

Phone +41 58 934 75 53
lana.abadesso@zhaw.ch



Céline Goetschi
International Relations
Coordinator

Phone +41 58 934 75 53
celine.goetschi@zhaw.ch

Your contacts at the International Office



Benno Baumberger
Operations Manager
International Office

Phone +41 58 934 62 69
benno.baumberger@zhaw.ch



Larissa Conrad
Outgoing Coordinator
Europe

Phone +41 58 934 68 55
outgoing.area1.sml@zhaw.ch



Felicitas Zoppi
Outgoing Coordinator
Americas and Switzerland

Phone +41 58 934 60 62
outgoing.area2.sml@zhaw.ch

SML International – what we do

International Affairs at the ZHAW School of Management and Law comprises the work of three teams: **International Relations** is responsible for the development and maintenance of the partner university network. It is the key liaison for partner universities wishing to organize study trips to Switzerland. **International Development & Projects** is responsible for international research and consulting projects. The development of double degrees is also located here. The **International Office** is in charge of the administration of student mobility. It organizes the student exchanges for incoming and outgoing students. Consultancy and student support in all matters concerning study abroad topics and the administration of every aspect of student exchange is the focus of activity here.

>>> www.zhaw.ch/sml/international



Jennifer Steffen
Outgoing Coordinator
Asia-Pacific, Middle East, Africa

Phone +41 58 934 78 85
outgoing.area3.sml@zhaw.ch



Sandra Aerne
Incoming Coordinator
Europe

Phone +41 58 934 73 05
sandra.aerne@zhaw.ch



Maarit Katariina Vähä-Piikkiö
Incoming Coordinator
Overseas

Phone +41 58 934 62 51
maaritkatariina.vaehae-piikkioe@zhaw.ch

Bachelor's Modules in English

Academic Year 2023/2024

BANKING/ FINANCE/ ACCOUNTING/ INSURANCE

Modules	Hours ¹	ECTS	Semester
Banking Management	4	6	Fall
Data Science and Technology for Insurance	4	6	Fall
Investor Relations and Equity Analysis (Elective)	2	3	Fall
Sustainable Finance (Elective)	2	3	Fall
Wealth Management & Compliance	4	6	Fall
Consolidated Financial Statements	4	6	Fall/Spring
Corporate Finance & Risk Management	4	6	Fall/Spring
Financial Instruments & Portfolio Theory	4	6	Fall/Spring
M&A Integrationsmanagement (Elective)	2	3	Fall/Spring
Smart Data Analytics for Financial Assets (Elective)	2	3	Fall/Spring
Turnaround Management	4	6	Fall/Spring
Strategic Management and Innovation (Risk & Insurance)	4	6	Spring

BUSINESS ADMINISTRATION / GENERAL MANAGEMENT / ECONOMICS

Modules	Hours ¹	ECTS	Semester
Behavioral Economics Theory	2	3	Fall
Climate and Energy Economics (Elective)	2	3	Fall
Corporate Responsibility	2	3	Fall
Introduction to Behavioral Economics	2	3	Fall
Leadership and Business Ethics	2	3	Fall
Managing People in an International Context	4	6	Fall
Online Marketing: The Challenge (Elective)	2	3	Fall
Business Value of Blockchain (Elective)	2	3	Fall/Spring
Customer Insights (Elective)	2	3	Fall/Spring
Empirical Methods in Economics (Elective)	2	3	Fall/Spring
Global Marketing Management for Incomings	4	6	Fall/Spring
Information, Incentives and Strategic Thinking (Elective)	2	3	Fall/Spring
Introduction to Swiss Society and Politics	2	3	Fall/Spring
Organizational Design in a VUCA World (Elective)	2	3	Fall/Spring
Managing Bioeconomy (Elective)	2	3	Fall/Spring
MCE – Managing Circular Economy (Elective)	2	3	Fall/Spring
Of Choices and Mistakes: The Economics of Decision-Making (Elective)	2	3	Fall/Spring
Strategic Management for Incomings	4	6	Fall/Spring
Supply Chain Management (Elective)	2	3	Fall/Spring

BUSINESS ADMINISTRATION / GENERAL MANAGEMENT / ECONOMICS (CONTINUED)

Modules	Hours ¹	ECTS	Semester
Digital Reputation Marketing (Elective)	2	3	Spring
History of Financial Crises (Elective)	2	3	Spring
Learning from Disasters (Elective)	2	3	Spring
Product Development Management	4	6	Spring

BUSINESS LAW

Modules	Hours ¹	ECTS	Semester
Compliance & Corporate Responsibility	4	6	Fall
Anglo-American Law	2	3	Fall/Spring
Digitalization and Law (Elective)	2	3	Fall/Spring
European Law	4	6	Fall/Spring
Public International Law and Legal Systems	2	3	Fall/Spring
Data Protection and Data Management	2	3	Spring

BUSINESS INFORMATION TECHNOLOGY

Modules	Hours ¹	ECTS	Semester
Data Analytics	4	6	Fall
Data Analysis and Presentation in Excel and Python (Elective)	2	3	Fall/Spring
Data Management	4	6	Fall/Spring
Leadership, Ethics & Intercultural Competence	4	5	Fall/Spring
AI Applications	2	3	Spring
Data Science Introduction	2	3	Spring
Machine Learning II	4	6	Spring
Scientific Programming	2	3	Spring

¹ Hours per week

INTERNATIONAL BUSINESS

Modules	Hours ¹	ECTS	Semester
Advanced International Business	4	6	Fall
Crisis Management: Action Planning and Directing (Elective)	2	3	Fall
International Business & Ethics	4	6	Fall
International Negotiation (Elective)	2	3	Fall
International Strategic Management	4	6	Fall
Brand Management (Elective)	2	3	Fall/Spring
Business and Human Rights (Elective)	2	3	Fall/Spring
Business in the Climate Crisis (Elective)	2	3	Fall/Spring
Doing Business in Asia Pacific (Elective)	2	3	Fall/Spring
Doing Business in Europe (Elective)	2	3	Fall/Spring
Doing Business in Latin America (Elective)	2	3	Fall/Spring
European Affairs (Elective)	2	3	Fall/Spring
Intercultural Management for Incomings	4	6	Fall/Spring
International Business	4	6	Fall/Spring
International Corporate Responsibility Management (Elective)	2	3	Fall/Spring
International Negotiation for Incomings	4	6	Fall/Spring
International Trade and Policy (Elective)	2	3	Fall/Spring
Business-Government Relations (Elective)	2	3	Spring
Competition Policy: EU, US and Switzerland (Elective)	2	3	Spring
Doing Business in the Middle East (Elective)	2	3	Spring
Environmental Economics and Politics (Elective)	2	3	Spring
Firms in the Global Economy (Elective)	2	3	Spring
Focal Points in Current Affairs (Elective)	2	3	Spring
International Relations – Politics in Business (Elective)	2	3	Spring
Introduction to Luxury Management (Elective)	2	3	Spring
Luxury Foresight: Key Trends & Business Implications (Elective)	2	3	Spring
Managing Digital Transformation in the Luxury Sector (Elective)	2	3	Spring
Quantitative Methods and Big Data for Managers (Elective)	2	3	Spring
War, Economics and Business (Elective)	2	3	Spring

LANGUAGE AND COMMUNICATION

Modules	Hours ¹	ECTS	Semester
English C1 (in Business IT)	2	3	Fall
Business English 1	2	3	Fall/Spring
Business English 2	2	3	Fall/Spring
Business English Advanced 1	2	3	Fall/Spring
Business English Advanced 2	2	3	Fall/Spring
German Beginners	2	3	Fall/Spring
German Intermediate	2	3	Fall/Spring
Legal English 1	2	3	Fall/Spring
Legal English 2	2	3	Fall/Spring
Legal English Advanced 1	2	3	Fall/Spring
Legal English Advanced 2	2	3	Fall/Spring

¹Hours per week

Master's Modules in English Academic Year 2023/2024

BANKING & FINANCE

Modules	Hours ¹	ECTS	Semester
Corporate and Entrepreneurial Finance	2	3	Fall
Institutional Frameworks	4	3	Fall
International Economics	4	3	Fall
Investments	6	6	Fall
Quantitative Methods	6	6	Fall
Advanced International Research Projects	Guided Self-study**	6	Spring
Agile and Innovation Methods	4	6	Spring
Customer Behavior Research Methods	2	3	Spring
Customer Experience Management	2	3	Spring
International Wealth Management (Elective)	2	3	Spring
Performance Management	2	3	Spring
Quantitative Investment Strategies	4	6	Spring
Real Estate Finance (Elective)	2	3	Spring
Risk Management	4	6	Spring
Strategic Innovation Management	2	3	Spring
Sustainable Investments	3	3	Spring

BUSINESS ADMINISTRATION – MAJOR INNOVATION AND ENTREPRENEURSHIP

Modules	Hours ¹	ECTS	Semester
International Entrepreneurship	4	6	Fall
Innovation Ecosystems	4	6	Fall
Innovation & Venture LAB III: Collaborative Innovation Project	4	6	Fall
Digital Transformation (Elective)	2	3	Fall

BUSINESS ADMINISTRATION – MAJOR MARKETING

Modules	Hours ¹	ECTS	Semester
Pricing & Business Models in the Digital Age	4	6	Fall
Brand Management, Communications & Reputation Management	4	6	Fall
E-Commerce (Elective)	2	3	Fall
Digital Marketing for Start-ups (Elective)	2	3	Fall
Marketing Technology (Elective)	2	3	Fall
Automation & AI in Marketing (Elective)	2	3	Fall

BUSINESS INFORMATION TECHNOLOGY

Modules	Hours ¹	ECTS	Semester
Data Science Fundamentals	2	3	Fall
IT Security	2	3	Fall
IT Governance, Risk and Compliance	2	3	Fall
Process Digitalization	4	6	Fall

MANAGEMENT AND LAW

Modules	Hours ¹	ECTS	Semester
International Economics and Politics	4	6	Fall
Applied Research Projects	Autonomous Self-study**	6	Fall/Spring
International Labour and Social Security Law	4	6	Spring
Managing Strategy	4	6	Spring
Regulation and Competition	4	6	Spring

¹Hours per week; **Very few or no hours of classroom instruction, mainly self-study for a research paper or project



Academic Program

An overview of our degree programs and accreditations

Bachelor's degree studies at the ZHAW School of Management and Law take three years to complete. They consist of a foundation year followed by an intensive two-year curriculum in the chosen specialization.

BACHELOR'S DEGREE PROGRAMS, BSC

- **Business Administration;** 7 specializations: Banking and Finance / Behavioral Design / Financial Management / General Management / Marketing / Politics and Management / Risk and Insurance
- **Business Information Technology;** 2 specializations: Business Information Systems / Data Science
- **International Management** (entirely in English)
- **Business Law**
- **Applied Law**

MASTER'S DEGREE PROGRAMS, MSC

- **Accounting and Controlling**
- **Banking and Finance** (entirely in English)
- **Business Administration;** 5 specializations: Enterprise Development / Health Economics and Health-care Management / Innovation and Entrepreneurship / Marketing / Public and Nonprofit Management
- **Business Information Technology**
- **Circular Economy Management**
- **International Business** (entirely in English)
- **Management and Law**
- **Real Estate and Facility Management**

MASTER OF BUSINESS ADMINISTRATION (MBA)

ACCREDITATION AND RANKING

To ensure continuous quality improvement, the ZHAW School of Management and Law (SML) submits itself to regular scrutiny by international quality assurance organizations.

AACSB

Since 2015, the SML has been proud to be accredited by the Association to Advance Collegiate Schools of Business (AACSB). Only around six percent of all business schools worldwide bear this seal of quality from the leading accreditation body in this field.

FIBAA

All Bachelor's and Master's programs are FIBAA-accredited, whereof two Bachelor's programs (Business Administration and Business Information Technology) hold the FIBAA Premium Seal.

FINANCIAL TIMES RANKING

The SML is ranked in the Financial Times best European business schools, the top 90 management programs worldwide, and the top 75 open-enrollment executive education programs worldwide. In 2022 the school was ranked 82nd among European business schools, its MSc International Business was ranked 68th among the world's best Master's programs in Management, and its executive education program was ranked 71st among the world's best open-enrollment executive education programs.

Information on student exchange

Key information to help potential exchange students make up their minds is set out below, including important dates and deadlines, language requirements, and what it will cost to study at the ZHAW School of Management and Law.

IMPORTANT DATES 2023/24

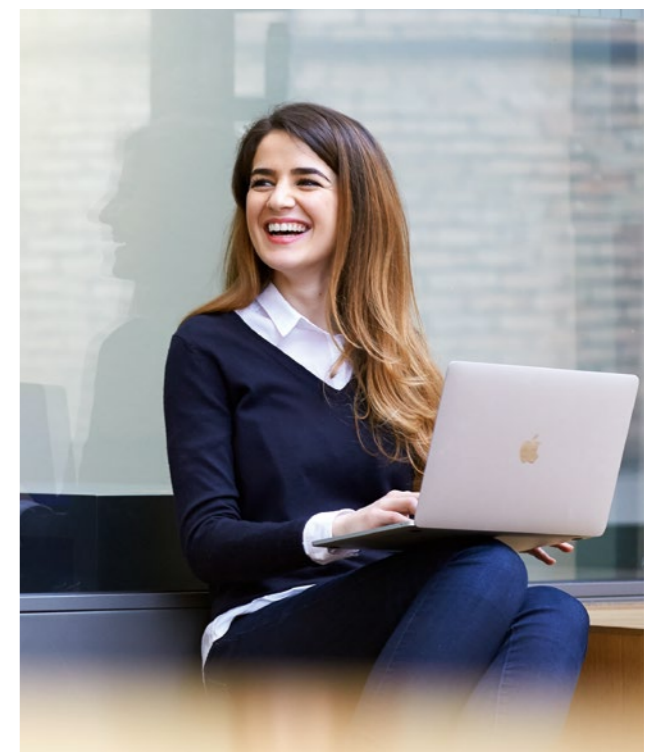
Semester	Fall (Sept – Jan)	Spring (Feb – June)
Application deadline	31 May 2023	20 October 2023
Start of orientation week	11 September 2023	12 February 2024
First day of classes	18 September 2023	20 February 2024
Start of exam period	15 January 2024	10 June 2024
End of exam period	3 February 2024	29 June 2024

LANGUAGE REQUIREMENTS

The required minimum level of English is B2+/C1 (Competent User / Proficient User) as defined by the Common European Framework of Reference for Languages (CEFR). This is equivalent to TOEFL 550 PBT/79 iBT, Cambridge Advanced, IELTS 6.5, and BEC Higher. To study at Master's level, the required minimum level of English is C1.

Average cost per month for students

Accommodation	CHF	625
Food	CHF	450
Transportation	CHF	100
Leisure	CHF	250
Course materials	CHF	50
Expenses	CHF	125
Total	CHF	1,600



BACHELOR'S DEGREE OFFERED IN ENGLISH
6 SEMESTERS, FULL-TIME / 8 SEMESTERS, PART-TIME

Bachelor's Program	1st year	2nd year	3rd year
BSc Business Administration – Banking and Finance			
BSc Business Administration – Behavioral Design			
BSc Business Administration – Financial Management			
BSc Business Administration – General Management			
BSc Business Administration – Marketing			
BSc Business Administration – Politics and Management			
BSc Business Administration – Risk and Insurance			
BSc Business Information Technology – Business Information Systems			
BSc Business Information Technology – Data Science			
BSc International Management			
BSc Business Law			
BSc Applied Law			

MASTER'S DEGREE OFFERED IN ENGLISH
3 SEMESTERS, FULL-TIME* / 4 SEMESTERS, PART-TIME

Master's Program	1st year	2nd year
MSc Accounting and Controlling		
MSc Banking and Finance		
MSc Business Administration – Enterprise Development		
MSc Business Administration – Health Economics and Healthcare Management		
MSc Business Administration – Innovation and Entrepreneurship		
MSc Business Administration – Marketing		
MSc Business Administration – Public and Nonprofit Management		
MSc Business Information Technology		
MSc Circular Economy Management*		
MSc International Business*		
MSc Management and Law		
MSc Real Estate and Facility Management		

*= only MSc International Business and MSc Circular Economy Management

in English
 partly in English
 in German



Our commitment is to help you meet the world and equip you for management in a global context.

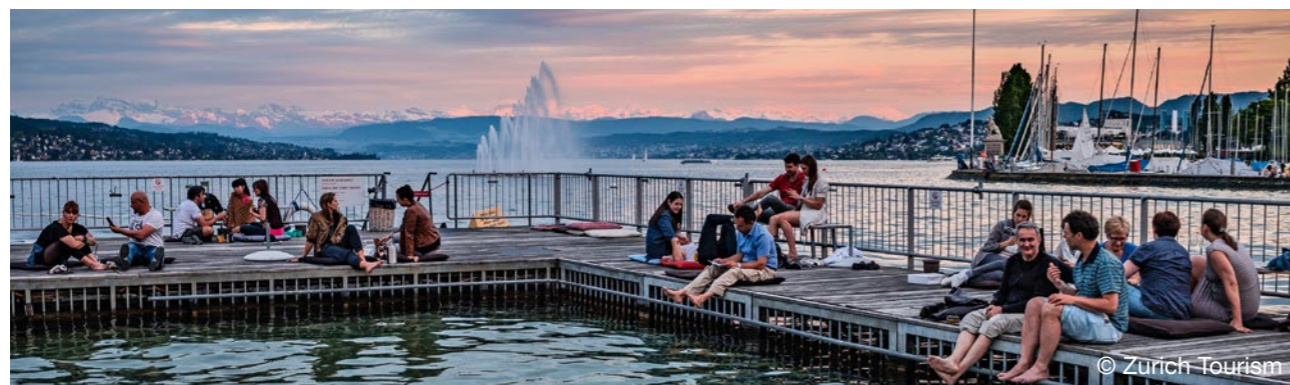
Welcome to the Heart of Europe

Enjoy your stay in Switzerland

Switzerland is an outstanding country to explore and a year-round travel destination.

WHY CHOOSE SWITZERLAND?

- Switzerland is one of the most competitive countries in the world and is the leader in attracting and retaining domestic and international talent (IMD 2022)
- Number one in the world for international innovation (Global Innovation Index 2022)
- High standard of living
- Outstanding natural environment
- Switzerland is one of the most developed countries in the world (#1 in the UN Human Development Index 2022)
- “Swiss Made” label stands for high quality (#2 FutureBrand Country Index 2020)



CUSTOMIZED STUDY TRIPS

Short-term, intensive programs according to your requirements, for Bachelor's and Master's students. Combination of lectures and company visits.

Choose from a variety of focus areas: e.g., Luxury Management, Digital Marketing, International Business, Leadership, Innovation & Entrepreneurship, Banking & Finance, and many others.



Campus Plus

What else you can expect

In addition to your studies, ZHAW and the cities of Zurich and Winterthur have plenty to offer.

CAMPUS WINTERTHUR

The ZHAW School of Management and Law buildings are situated in the center of the city of Winterthur. The railway station is within easy walking distance. Opened in 2015, the University Library at “Sulzerareal”, a former industrial site, has workstations for over 650 students and a state-of-the-art infrastructure.

ERASMUS STUDENT NETWORK (ESN)

The Erasmus Student Network (ESN) Winterthur enhances the study abroad experience for international students by organizing events and other activities such as a welcome party for new students or trips to the world-famous Rhine Falls or a Swiss chocolate factory.

ACCOMMODATION

The International Office, together with the Student Accommodation Association (WOKO), is responsible for negotiating affordable student housing in Winterthur and Zurich.

>>> www.woko.ch

STUDENT ASSOCIATIONS

All ZHAW students are automatically members of ALIAS (ZHAW Student Association). The association represents the student body within the university and regularly publishes its student magazine “Brainstorm.” In addition, ALIAS organizes various parties and social events. ALIAS is your point of contact for any personal concerns as well as for student projects, which it may also support financially.

>>> www.alias-zhaw.ch

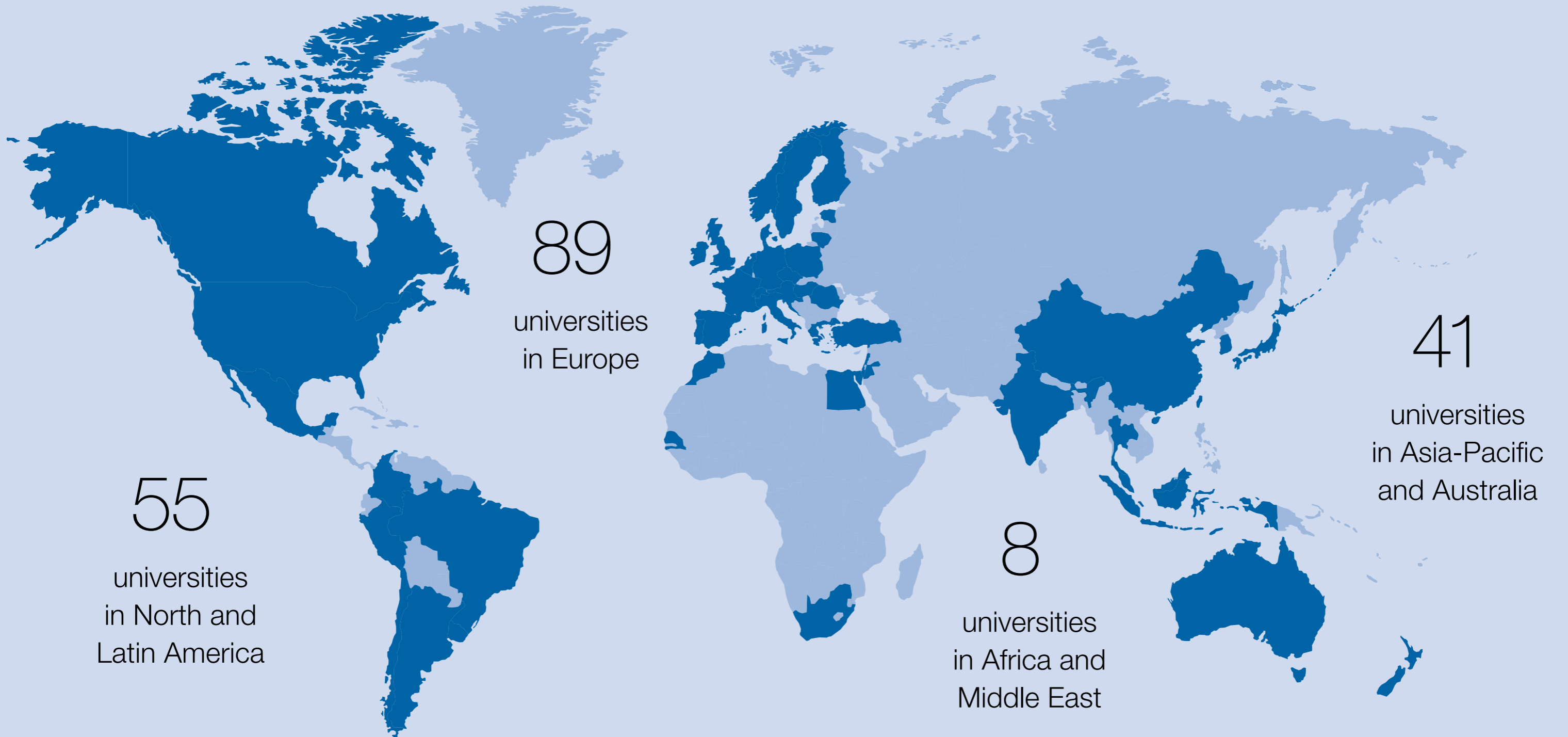
SPORTS AT ZHAW

From A for Aikido to Z for Zumba. ASVZ (Academic Sports Association Zurich) offers over 120 different sports in Winterthur and Zurich as an active way to achieve a healthy work-life balance. Benefit from an extensive infrastructure with modern sports equipment as well as knowledgeable, professional supervision. ASVZ membership is included in your semester fees.

>>> www.asvz.ch



Our International Partner Network



55
universities
in North and
Latin America

89
universities
in Europe

8
universities
in Africa and
Middle East

41
universities
in Asia-Pacific
and Australia

International Partner Universities

EUROPE

Country	City	Institution	Accreditations
Austria	Innsbruck	MCI Management Center Innsbruck	AACSB
Belgium	Brussels	ICHEC Brussels Management School	AACSB, EPAS
	Liège	University of Liège	AACSB, EQUIS, EPAS
Croatia	Zagreb	Zagreb School of Economics and Management	AACSB
Czechia	Prague	Prague University of Economics and Business	EQUIS, EPAS, CEMS
Denmark	several campuses	University of Southern Denmark	
Estonia	Tartu	University of Tartu	
Finland	Espoo	Laurea University of Applied Sciences	
	Tampere	Tampere University	
France	Aix-en-Provence	IAE Aix Graduate School of Management, Université Aix-Marseille	EQUIS, AMBA
	Angers, Paris	ESSCA Ecole de Management	AACSB, AMBA, EQUIS
	Bordeaux, Marseille	KEDGE Business School	AACSB, EQUIS, AMBA
	Caen, Le Havre	EM Normandie	AACSB, EQUIS
	Dijon	BSB Burgundy School of Business	AACSB, EQUIS, EPAS
	La Rochelle	Excelia Business School	AACSB, EQUIS, AMBA
	Lille, Paris	IÉSEG School of Management	AACSB, EQUIS, AMBA
	Lyon	EM Lyon	AACSB, EQUIS, AMBA
	Nancy	ICN Business School	AACSB, EQUIS, AMBA
	Nantes	Audencia Nantes	AACSB, EQUIS, AMBA
	Nice, Lille, Paris	EDHEC Business School (campus in Singapore and London too)	AACSB, EQUIS, AMBA
	Paris	ESCE International Business School	EPAS
	Paris	PSB Paris School of Business	AACSB, AMBA, EPAS
	Paris	ISC Paris – Business School	AACSB, AMBA, EPAS
	Paris	Université Paris IX Dauphine	EQUIS
	Paris, Bordeaux, Lyon	INSEEC School of Business & Economics	AMBA
	Paris	Université Paris 1 Panthéon-Sorbonne	
	Rennes	Rennes School of Business	AACSB, EQUIS, AMBA
	Rouen	NEOMA Business School	AACSB, EQUIS, AMBA
Strasbourg	University of Strasbourg, EM Strasbourg Business School	AACSB, AMBA, EPAS	
Toulouse	Groupe ESC Toulouse, Toulouse Business School	AACSB, EQUIS, AMBA	
Toulouse	Université Toulouse 1 Capitole IAE-Toulouse, Graduate School of Management	EPAS	

EUROPE

Country	City	Institution	Accreditations
Germany	Berlin	Hochschule für Technik und Wirtschaft Berlin	FIBAA
	Berlin	Hochschule für Wirtschaft und Recht Berlin	AMBA, EPAS, FIBAA
	Frankfurt am Main	Frankfurt School of Finance & Management	AACSB, EQUIS, AMBA, EPAS
	Munich	University of Applied Sciences Munich	FIBAA
	Reutlingen	ESB Business School	AACSB, FIBAA
	Wiesbaden	University of Applied Sciences RheinMain, Wiesbaden Business School	FIBAA
	Wismar	Hochschule Wismar	FIBAA
Great Britain	Aberdeen	Robert Gordon University, Aberdeen Business School	AACSB, AMBA
	Birmingham	Birmingham Business School	AACSB, EQUIS, AMBA
	Exeter	University of Exeter	AACSB, EQUIS, AMBA
	Hertfordshire	University of Hertfordshire	AMBA, EPAS
	Keele	Keele University	
	Leeds	University of Leeds	AACSB, EQUIS, AMBA
	Leicester	De Montfort University	
	London	City University London, Bayes Business School	AACSB, EQUIS, AMBA
	London	University College London	Russell Group
	London	INSEEC School of Business & Economics	AMBA
	Loughborough	Loughborough University	AACSB, EQUIS, AMBA
	Newcastle	Northumbria University	AACSB
	Nottingham	Nottingham Trent University	AACSB, EQUIS, EPAS
Portsmouth	University of Portsmouth	EPAS	
Greece	Athens	Athens University of Economics and Business	AMBA
Ireland	Dublin	Technological University Dublin	AMBA
	Dublin	Griffith College Dublin*	
Italy	Bologna	Università di Bologna	EPAS, EQUIS
	Modena	Università degli Studi di Modena e Reggio Emilia (UNIMORE)	
	Rome	LUISS Guido Carli – Libera Università Internazionale degli Studi Sociali	AMBA, EQUIS

EUROPE

Country	City	Institution	Accreditations
Lithuania	Kaunas/Vilnius	ISM University of Management and Economics	
Monaco	Monaco	International University of Monaco	AACSB, AMBA
Netherlands	Amsterdam	Hogeschool van Amsterdam, School of Economics and Management	EPAS
	Groningen	University of Groningen	AACSB, EQUIS
Norway	Oslo	BI Norwegian Business School	AACSB, EQUIS, AMBA
Poland	Krakow	Cracow University of Economics	EPAS
	Warsaw	Kozminski University	AACSB, EQUIS, AMBA
	Warsaw	Warsaw School of Economics	AMBA, CEMS, EQUIS
Portugal	Carcavelos (Lisbon)	NOVA School of Business and Economics	AACSB, AMBA, EQUIS
	Lisbon	Universidade Católica Portuguesa, Católica Lisbon School of Business and Economics	AACSB, EQUIS, AMBA
	Lisbon	ISCTE, University Institute of Lisbon	AACSB, AMBA
	Porto	Universidade Católica Portuguesa, Porto School of Business	EQUIS, AMBA
Slovenia	Ljubljana	University of Ljubljana, Faculty of Economics	AACSB, EQUIS, AMBA
Spain	Barcelona	Groupe ESC Toulouse, TBS Barcelona	AACSB, EQUIS, AMBA
	Barcelona	IQS – Institut Químic de Sarria	AACSB
	Barcelona	Universitat Pompeu Fabra	AMBA, EQUIS
	Madrid	ESIC Business and Marketing School	AMBA
	Madrid	Universidad Complutense de Madrid, Colegio Universitario de Estudios Financieros (CUNEF)	
	Madrid	Universidad Carlos III de Madrid	AACSB, AMBA
	Madrid	Universidad CEU San Pablo	
	Madrid	Universidad Pontificia Comillas (ICADE Faculty of Law)	AACSB
Sweden	Jönköping	Jönköping International Business School	AACSB, EQUIS
	Kalmar/Växjö	Linnaeus University	AACSB
	Stockholm	Stockholm School of Economics	AACSB, EQUIS
Turkey	Istanbul	Koç University	AMBA, EQUIS, CEMS
	Istanbul	Sabancı University	AACSB



“Building Competence. Crossing Borders.” is our main principle, which underpins the high quality of our educational programs and research and reflects our global mindset.

NORTH AMERICA

Country	City	Institution	Accreditations
Canada	Hamilton	McMaster University	AACSB
	Montreal	Concordia University	AACSB
	Montreal	HEC Montreal*	AACSB, EQUIS, AMBA
	Montreal	Université du Québec à Montreal	
	Ottawa	Carleton University	AACSB
	Regina	University of Regina	
	Quebec	Université Laval	AACSB, EQUIS
	Toronto	Toronto Metropolitan University	AACSB
	Toronto	York University	EQUIS, AMBA
	Waterloo	Wilfrid Laurier University	AACSB
	Winnipeg	University of Manitoba	AACSB
USA	Allendale (MI)	Grand Valley State University	AACSB
	Boston	Northeastern University	AACSB
	Blacksburg (VA)	Virginia Polytechnic Institute and State University	AACSB
	Chicago (IL)	Loyola University Chicago	AACSB
	Cincinnati (OH)	University of Cincinnati	AACSB
	Columbia (SC)	University of South Carolina	AACSB
	DeLand (FL)	Stetson University	AACSB
	Lakeland (FL)	Florida Southern College	AACSB
	Long Beach (CA)	California State University, Long Beach	AACSB
	Los Angeles (CA)	California State University, Los Angeles	AACSB
	Marquette (MI)	Northern Michigan University	AACSB
	Milwaukee (WI)	Marquette University	AACSB
	New Orleans (LA)	Tulane University	AACSB
	New Paltz (NY)	SUNY New Paltz, State University of New York	AACSB
	New York (NY)	Fordham University, Law School*	AACSB
	New York (NY)	The City University of New York Baruch College, Zicklin School of Business	AACSB
New York (NY)	Pace University	AACSB	

NORTH AMERICA

Country	City	Institution	Accreditations
USA	Orange (CA)	Chapman University	AACSB
	Orlando (FL)	University of Central Florida	AACSB
	Pensacola (FL)	University of West Florida	AACSB
	Philadelphia (PA)	Drexel University	AACSB
	Raleigh	North Carolina State University	AACSB
	Reno (NV)	University of Nevada, Reno	AACSB
	San Diego (CA)	San Diego State University	AACSB
	San Francisco (CA)	San Francisco State University	AACSB
	San José (CA)	San José State University	AACSB
	Tampa (FL)	University of South Florida	AACSB
	Waco (TX)	Baylor University	AACSB
	Washington (DC)	American University, Kogod School of Business	AACSB

LATIN AMERICA

Country	City	Institution	Accreditations
Argentina	Buenos Aires	Universidad Argentina de la Empresa	
	Buenos Aires	Universidad de Belgrano	
Brazil	Ribeirão Preto	Universidade de São Paulo	
	Rio de Janeiro	Fundação Getulio Vargas, Escola Brasileira de Administração Pública e de Empresas	AACSB, EQUIS, AMBA
	Rio de Janeiro	Pontifícia Universidade Católica do Rio de Janeiro	
	São Paulo	Insper Instituto de Ensino e Pesquisa	AACSB, EQUIS, AMBA
Chile	Santiago de Chile	Universidad Diego Portales	AMBA
Colombia	Medellín	Universidad EAFIT	AMBA
Mexico	Guadalajara, León, Monterrey	Instituto Tecnológico y de Estudios Superiores de Monterrey	AACSB, EQUIS, AMBA
	Mexico City	Instituto Tecnológico Autónomo de México	AACSB, EQUIS, AMBA
	Mexico City	Universidad Iberoamericana	
	Mexico City	Universidad Panamericana	AACSB, EQUIS, AMBA
Peru	Lima	Universidad del Pacífico	AACSB, AMBA
	Lima	Universidad ESAN	AACSB, AMBA
Uruguay	Montevideo	Universidad de Montevideo	AMBA

OCEANIA

Country	City	Institution	Accreditations
Australia	Brisbane, Gold Coast	Griffith University	AACSB
	Geelong, Melbourne	Deakin University	AACSB, EQUIS, EPAS
	Melbourne	Swinburne University	AACSB
	Melbourne	University of Melbourne*	AACSB, EQUIS
	Perth	Curtin University	AACSB, EPAS
	Sydney, Brisbane, Melbourne	Australian Catholic University	
New Zealand	Auckland	Auckland University of Technology*	AACSB
	Christchurch	UC University of Canterbury	AACSB, EQUIS, AMBA

THE MIDDLE EAST AND AFRICA

Country	City	Institution	Accreditations
Egypt	Cairo	Misr International University	
Israel	Herzliya	Reichman University	
Jordan	Amman	University of Jordan	FIBAA (MBA only)
Lebanon	Beirut	American University Beirut	AACSB
Morocco	Casablanca	Toulouse Business School Casablanca	AACSB, EQUIS, AMBA
Senegal	Dakar	Groupe ISM, International School of Management	
South Africa	Cape Town	University of Cape Town*	AACSB, EQUIS, AMBA
	Pretoria	University of Pretoria	AACSB, EQUIS

ASIA

Country	City	Institution	Accreditations
China	Beijing	UIBE Business School	AACSB, AMBA
	Chengdu	SWUFE Southwestern University of Finance and Economics, School of Finance	AACSB, EQUIS
	Guangzhou	Sun Yat-sen University	AACSB, EQUIS, AMBA
	Hong Kong	Hong Kong Baptist University	AACSB, EQUIS, AMBA
	Hong Kong	The Hong Kong Polytechnic University	AACSB, EQUIS
	Hong Kong	The Hang Seng University of Hong Kong	
	Hong Kong	The Hong Kong Metropolitan University (HKMU)	



ASIA

Country	City	Institution	Accreditations
China	Ningbo	University of Nottingham Ningbo China	EQUIS, AMBA
	Shanghai	Shanghai Jiao Tong University, Antai College of Economics and Management	AACSB, EQUIS, AMBA
	Shenzhen	Peking University HSBC Business School	AACSB, AMBA, EPAS
	Wuhan	Wuhan University	EQUIS, AMBA
India	Bangalore	IIMB Indian Institute of Management Bangalore	EQUIS
	Gurgaon	MDI Gurgaon	AACSB, AMBA
Indonesia	Yogyakarta	University of Gadjah Mada	AACSB
Japan	Akita	Akita International University	
	Beppu	Ritsumeikan Asia Pacific University	AACSB, AMBA
	Tokyo	Rikkyo University	
Korea	Daejeon	SolBridge International School of Business	AACSB
	Daegu	Kyungpook National University	AACSB
	Seoul	Chung-Ang University	AACSB
	Seoul	Hanyang University	AACSB
	Seoul	Konkuk University	AACSB
	Seoul	Sogang University Business School	AACSB
	Seoul	Sungkyunkwan University	AACSB
Malaysia	Kuala Lumpur	University of Malaya	AACSB, AMBA
Singapore	Singapore	Nanyang Technological University	AACSB, EQUIS
Taiwan	Chaiyi	National Chung Cheng University (NCCU)	AACSB
	Hsinchu	National Yang Ming Chiao Tung University (NCTU)	AACSB
	Kaohsiung	National Sun Yat-sen University	AACSB
	Taipei	National Taiwan University	AACSB, EQUIS
	Taipei	National Chengchi University	AACSB, EQUIS
Thailand	Bangkok	Chulalongkorn University	AACSB, EQUIS, EPAS
	Salaya	Mahidol University	AACSB

* fee-paying

Any Questions?

For questions concerning SML International Relations, please contact us:
international.sml@zhaw.ch / Phone +41 58 934 62 69

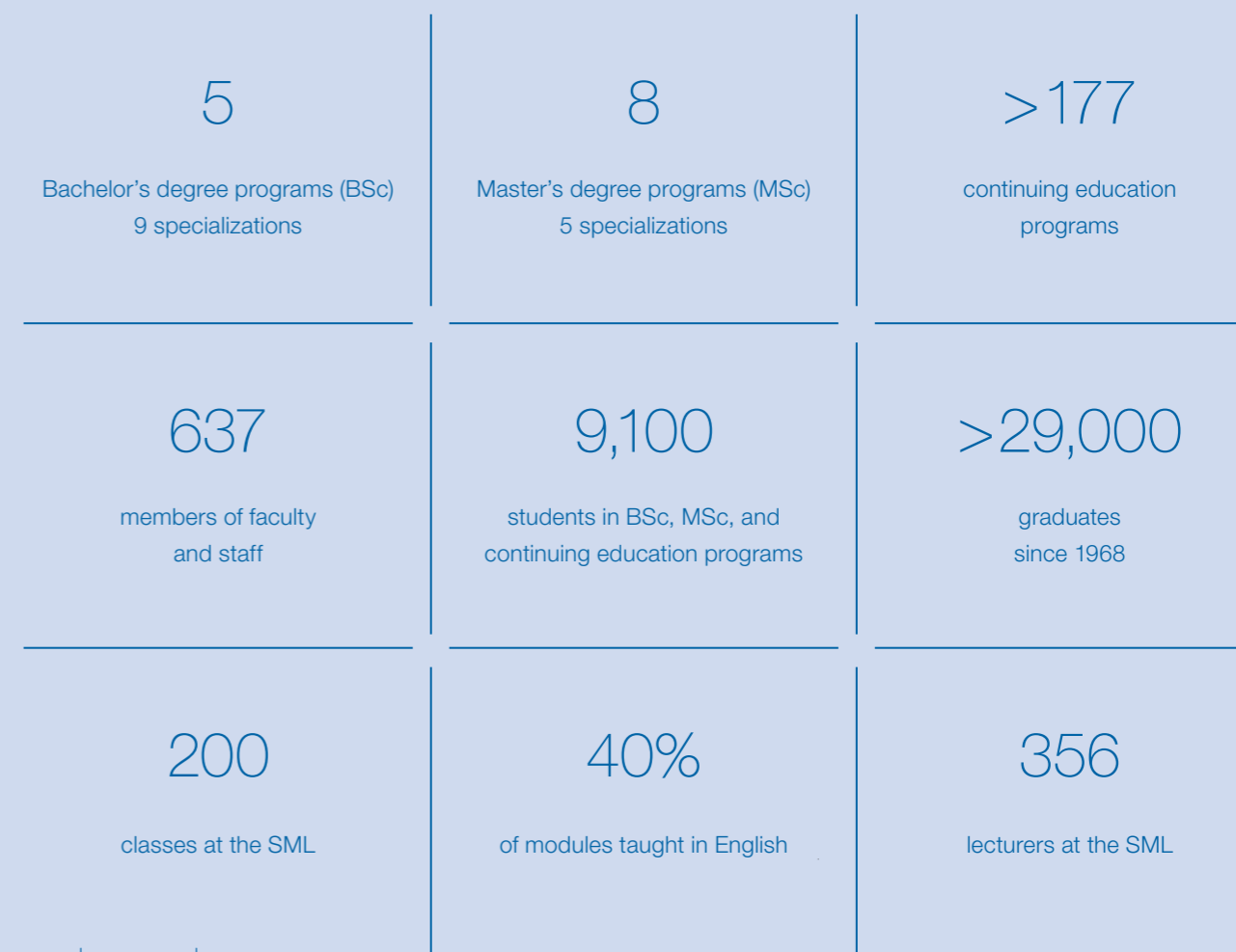
>>> www.zhaw.ch/sml/international



The SML in Figures

Our profile for your success

The ZHAW School of Management and Law (SML), established in 1968, is one of Switzerland's leading business schools. It offers internationally recognized Bachelor's and Master's programs and a comprehensive range of continuing education programs, as well as being actively engaged in innovative research and development projects.



Zurich University
of Applied Sciences

School of Management and Law

St.-Georgen-Platz 2
P.O. Box
8401 Winterthur
Switzerland

www.zhaw.ch/sml



swissuniversities

